

Sponsor eShowcase: What Role Does New Technology Play in Resolving the NonDispersibles Issue? Part 2

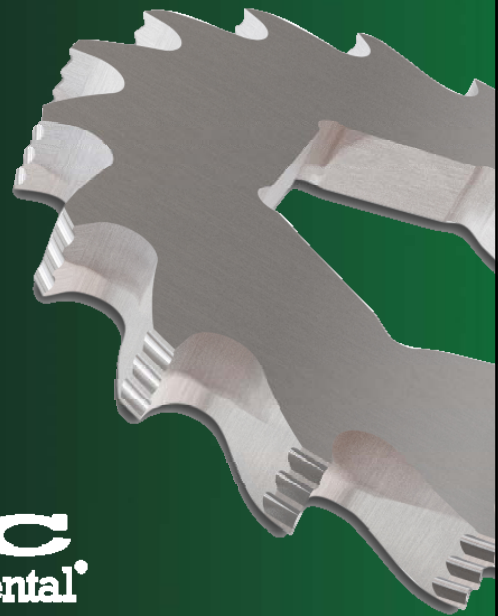
Thursday, June 11, 2015
1:00 - 1:45 pm ET



Retrofitting Older Pump Stations



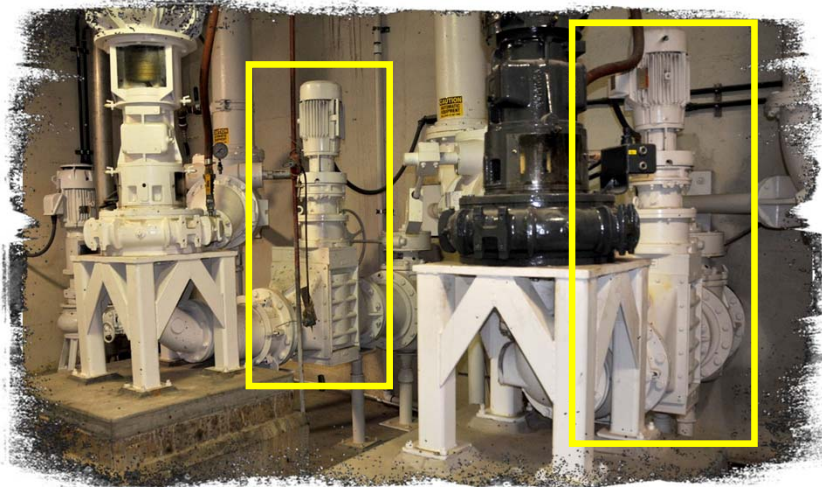
Alec Mackie
Marketing Manager



Option #1 In-Pipeline Grinders for Dry Wells



Option #1 In-Pipeline Grinders for Dry Wells



Case Study

*Orange County,
California*

400 HP Pumps

*40K Series
Muffin Monsters*

*Installed on inlet
side of pumps*

*Each grinder capable
of 3.5 MGD*

Deragging Went from 2-3/Week to 0/Week



Option #2 In-Channel Grinders

Case Study
 Orange County,
 California
 Channel Monster
 "This upgrade cost significantly less than new pumps. Plus, this solution will completely eliminate the pump clogging problems we were having."
 - Plant Superintendent

Sliced Annual Pumping Energy Costs by \$78k

Option #2 In-Channel Grinders



Case Study

Virginia Beach, Virginia

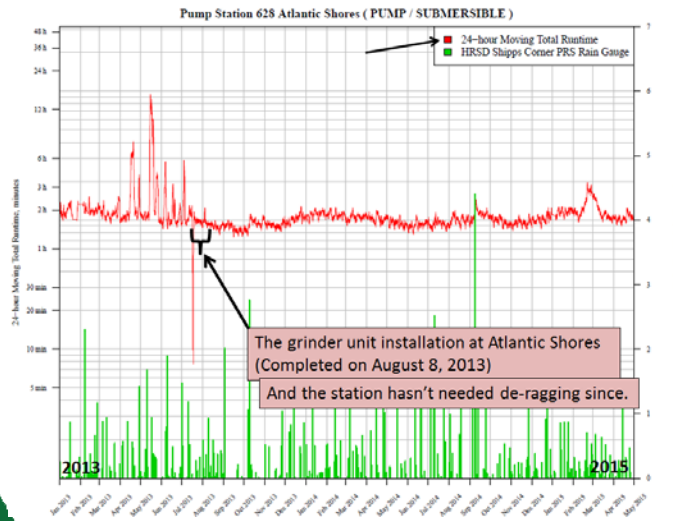
30K Series Muffin Monster

Immersible motor

Grinder can handle 700,000 GPD

Grinder Reduced Total Pump Run Time to 2 Hours/Day

Option #2 In-Channel Grinders



Case Study

Virginia Beach, Virginia

Station needed frequent deragging

After Muffin Monster Installation – No Deragging




Option #3 Wall Mounted Grinders



JWC Environmental
www.jwce.com

Option #3 Wall Mounted Grinders



Case Study

Red Rock Amphitheater, Colorado

30K Series Muffin Monster

Poorly performing comminutor could not handle debris load

Maintenance crews used salad tongs to remove debris from the old comminutor

Deragging Was a Three Hour Process

Option #3 Wall Mounted Grinders



Muffin Monsters Fit Almost Anywhere

Option #4 Wall Mounted Auger Screen



Option #4 Wall Mounted Auger Screen



Case Study

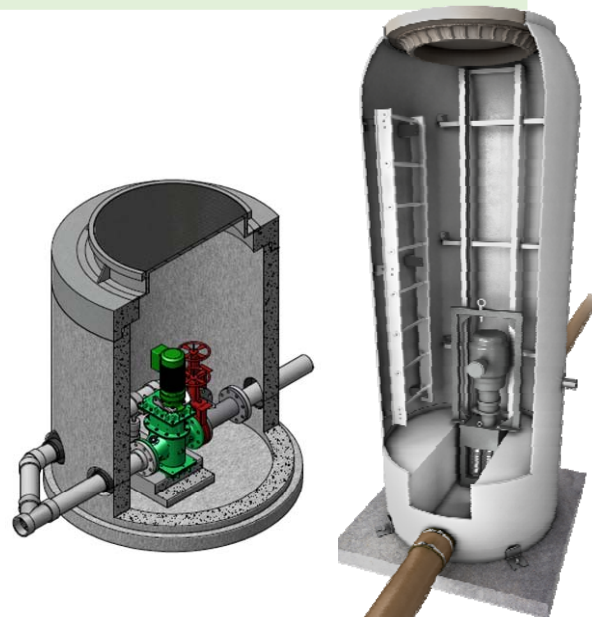
Georgia State Prison

*Vertical Auger
Monster model AGV*

*Removes trash and
debris inmates flush
down the drain*

Vertical Auger Monster Removes Debris from Pump Station

Option #5 Manhole Grinder



Option #5 Manhole Grinder



Case Study

*State Prison
Moore Haven, FL*

*30K
Muffin Monster*

*Pre-Fabricated
Manhole*

In Many Cities Prisons Are Required to Pre-Treat Sewage

Designed to Retrofit Any Pump Station

In-Pipeline



**In-Channel
or Wall Mounted**



**Vertical
Auger Screen**



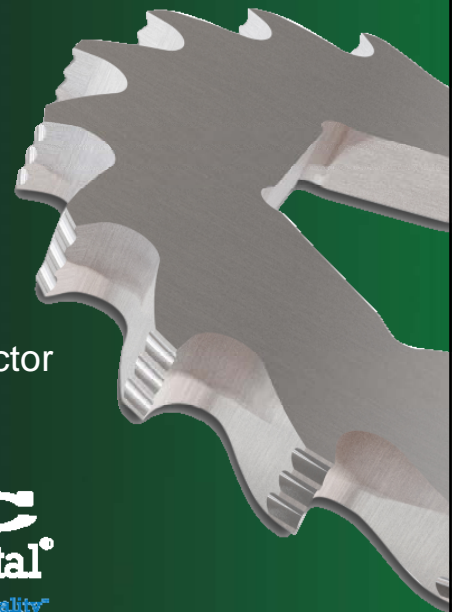
Are These Long-Term Solutions?



New Wipes Ready Technology



Kevin Bates
Global Marketing Director



JWC Is Proud to Support Our Industry

WERF



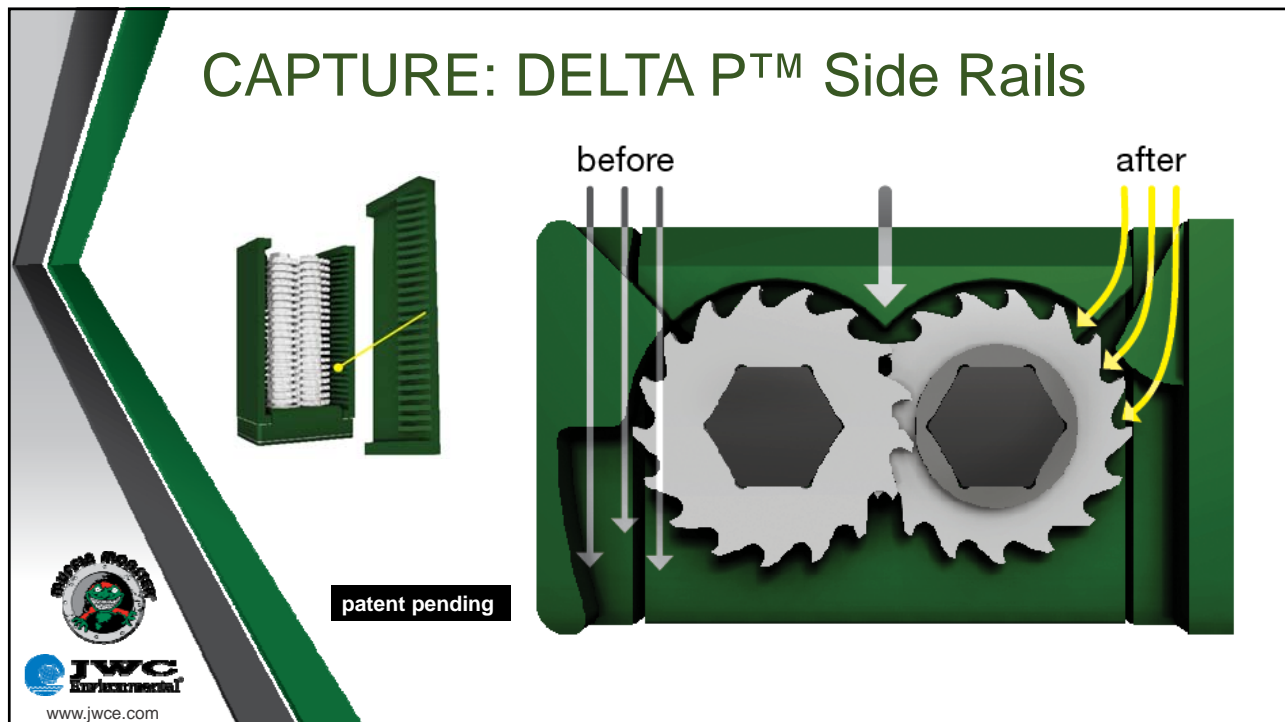
2014 Wipes Research Project (report pending)



Search for Technical Solutions

- Wipes Material Types
- Particle Size
- Grinder Bypass
- Reweaving





CUT: Wipes Ready Cutters Make the Difference

**Wipes Ready Cutters
=
No Reweaving**



**JWC:
cuts 2 ways**

**Other grinders and
comminutors: cut 1 way**



CUT: 17 Tooth Wipes Ready Cutters



- Serrated edges
- Knurled Spacers
- Cuts in 2 directions
- 51% Reduction in Long Strips

Other Grinders Wipes Ready Muffin Monster



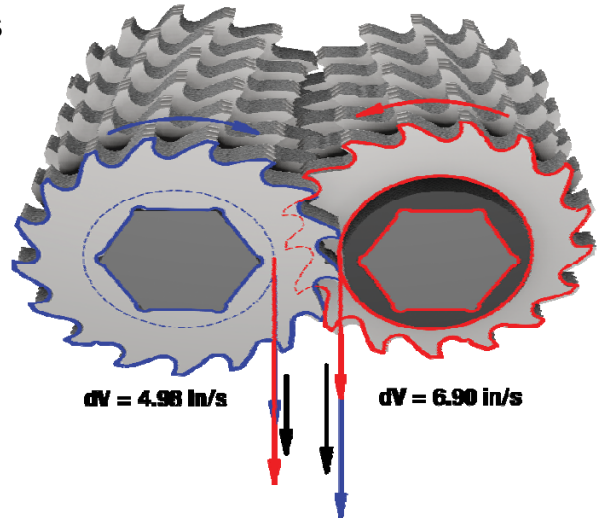
patent pending



CUT: Optimized Cut Control™

New drive gearing optimizes shaft speeds

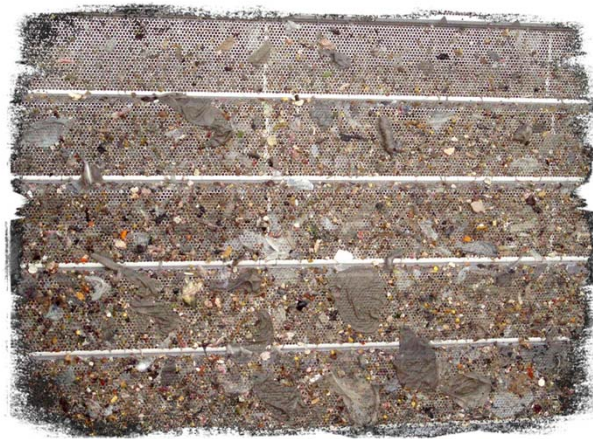
- Closer relative speed
- Better cutter clean-out
- Better cutting to small strips
- Reducers remain the same



patent pending



Last Stop: REMOVE Headworks Fine Screens



Finescreen Monster® technology



Last Stop: REMOVE Headworks Fine Screens



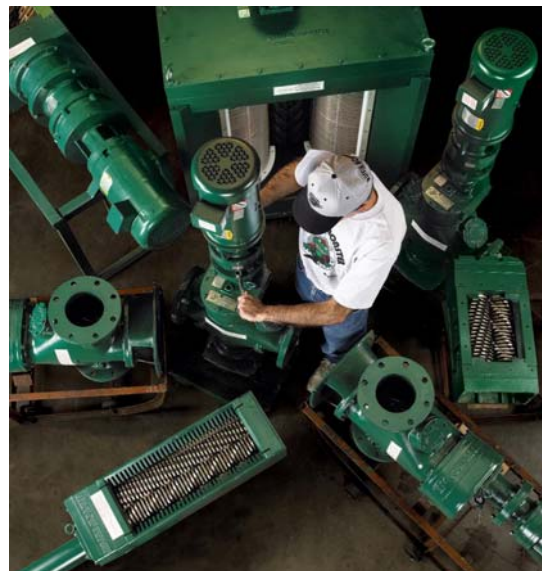
Bandscreen Monster® technology



Aftermarket Wipes Ready Options

Easy Factory Upgrades for Currently Installed Units

- 30004T/30005
- 2.0 CMD/CDD up to 60"
- Contact Service Team for a quote



Your Turn – Are You Wipes Ready Now?



Josh Dragon

Manager

Jensen Pumps

jdragon@jensenprecast.com

www.JensenPumps.com



Kevin Bates

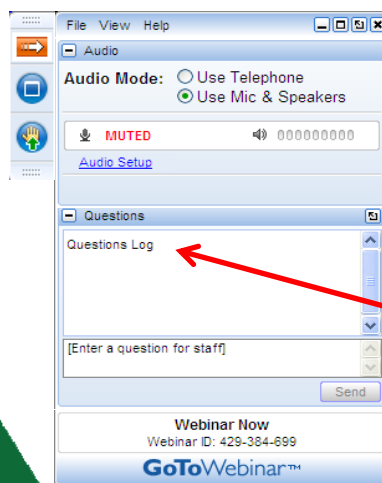
Global Marketing
Director

(714) 428-4647

kevinb@jwce.com

www.JWCE.com

How to Participate Today



- **Audio Modes**
 - Listen using Mic & Speakers
 - Or, select “Use Telephone” and dial the conference (please remember long distance phone charges apply).
- **Submit your questions using the Questions pane.**
- **A recording will be available for replay shortly after this webcast.**

