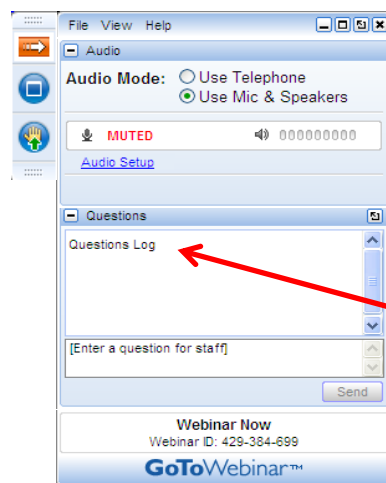


# SPONSOR ESHOWCASE: WHAT ROLE DOES NEW TECHNOLOGY PLAY IN RESOLVING THE NONDISPERSIBLES ISSUE? PART 1

THURSDAY, JUNE 11, 2015  
1:00 - 1:45 PM ET

## How to Participate Today



- **Audio Modes**
  - Listen using Mic & Speakers
  - Or, select "Use Telephone" and dial the conference (please remember long distance phone charges apply).
- **Submit your questions using the Questions pane.**
- **A recording will be available for replay shortly after this webcast.**



Designing Pump Stations to be Wipes Ready

## SOURCES OF WASTEWATER DEBRIS

### Industry

- Manufacturing
- Produce
- Food Processing

### Commercial

- Truck Stops / Restaurants
- Retirement Homes
- Entertainment Facilities

### Municipal

- Parks
- Prisons
- Military

Anywhere on the Las Vegas strip...



# CHALLENGES FOR PUMP STATIONS

- Pumps
  - Pass Solids
  - Not Ropes
  - Shaft Deflection

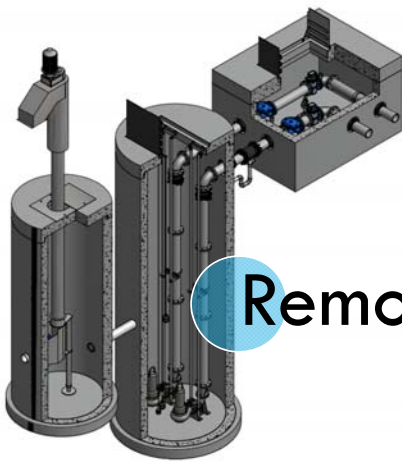


- Level Detection
  - Floats: Trash Balls
  - Probe Shorts

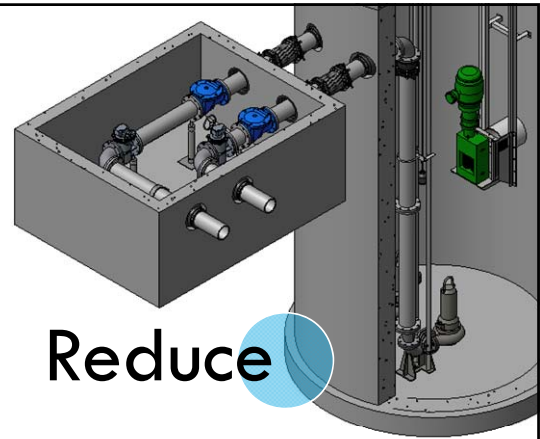
- Debris Collection
  - In Corners
  - On Components
  - Fats/Oils/Grease



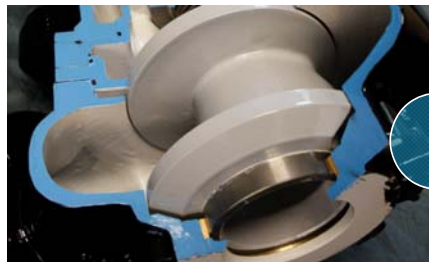
## DESIGN SOLUTION: PROTECT THE PUMP



Remove



Reduce

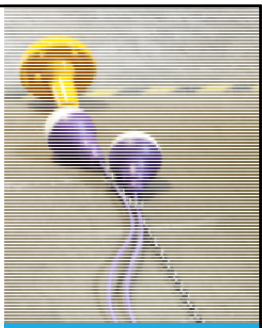


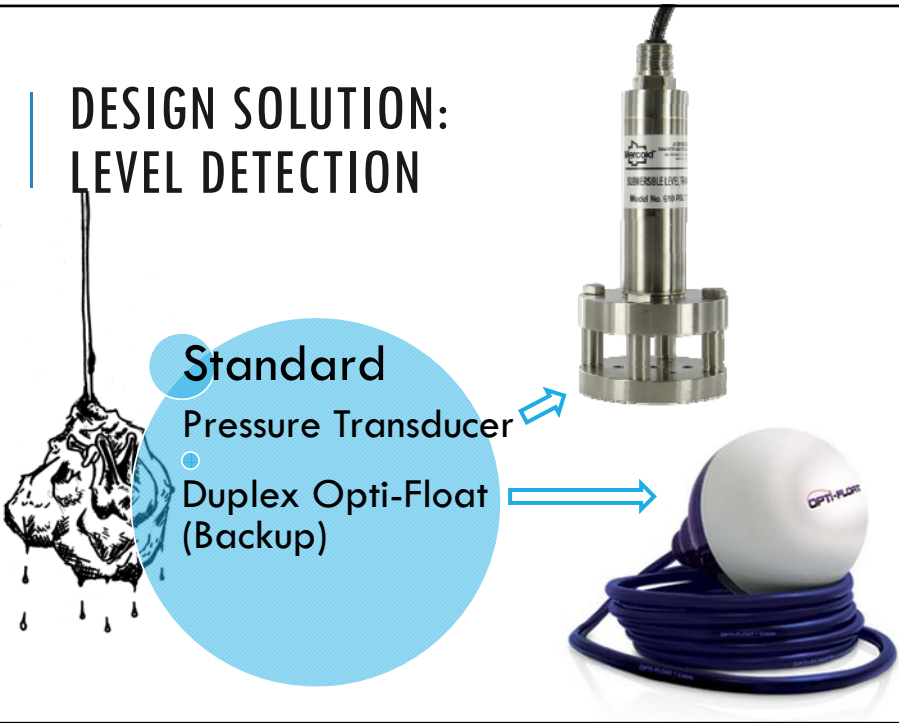


Restrain

### DESIGN SOLUTION: LEVEL DETECTION

Standard Pressure Transducer

Duplex Opti-Float (Backup)



### DESIGN SOLUTION: DEBRIS / FOG

Drop Bowl

Sloped Basin

Cleanout Cycle

Mixer



**JOSH DRAGON, P.E.**

**Jensen Pump Stations**

**Division Manager**

[JensenPumps.com](http://JensenPumps.com)

[jdragon@jensenprecast.com](mailto:jdragon@jensenprecast.com)

Twitter: [@JensenPumps](https://twitter.com/JensenPumps)

- Has overseen the design & construction of over 250 Pump Stations
- Flow range: 20 – 3000 GPM
- Style: Submersible, Dry Pit, & Line Shaft
- Fluid: Wastewater, Stormwater
- Locations: Western United States

