

evoQUA
WATER TECHNOLOGIES

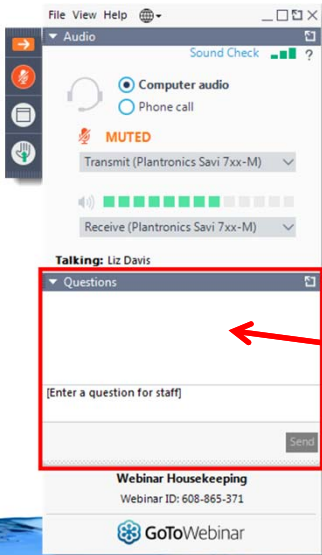
SOLVING PHOSPHORUS REMOVAL CHALLENGES
WITH MAGNETITE BALLASTED TECHNOLOGY

TRANSFORMING WATER. ENRICHING LIFE.

©2020 Evoqua Water Technologies

1

How to Participate Today



- **Audio Modes**
 - Listen using Mic & Speakers
 - Or, select “Use Telephone” and dial the conference (please remember long distance phone charges apply).
- **Submit your questions using the Questions pane.**
- **A recording will be available for replay shortly after this webcast.**

Webinar Housekeeping
Webinar ID: 608-865-371
GoToWebinar

Page 2
©2020 Evoqua Water Technologies

2

Why Magnetite?

High specific gravity: **5.2**

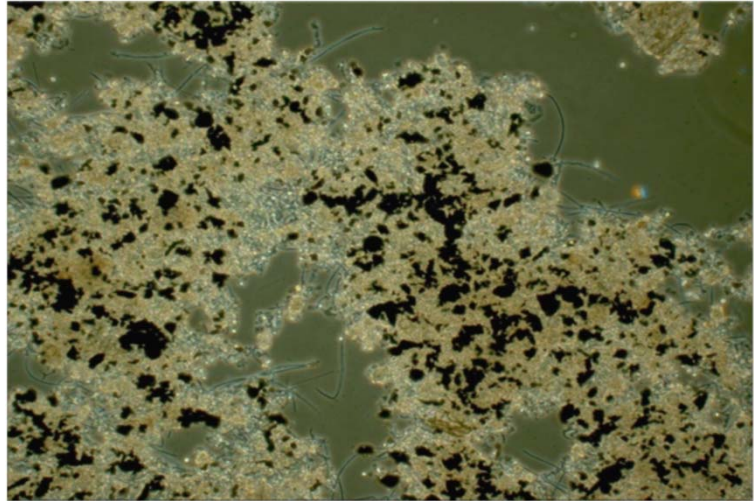
Readily available iron ore

Inexpensive commodity

Inert (NSF 61 certification)

Conveyable

Magnetically **recoverable**



3

Ballast Recovery



>99%
recovery



Magnetically
recovered



Sustainable



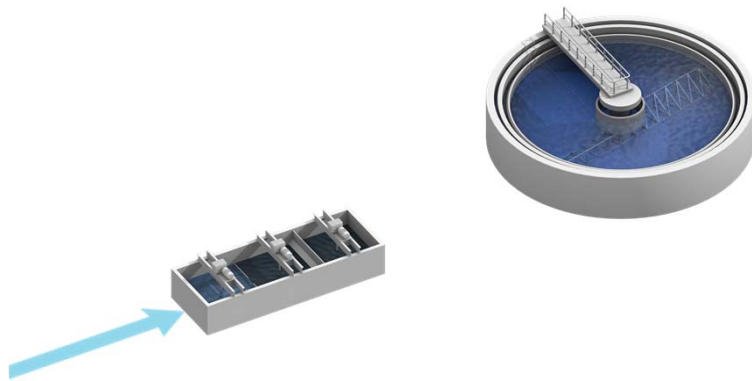
4

Flow Diagram



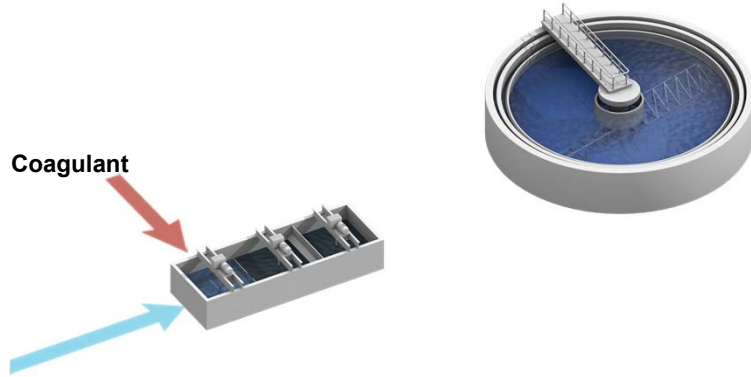
5

Flow Diagram



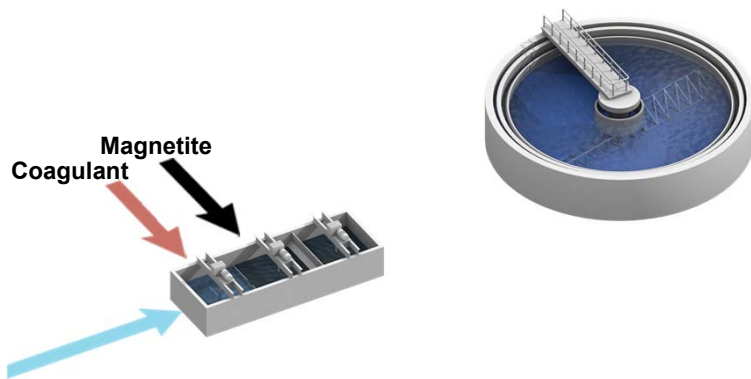
6

Flow Diagram



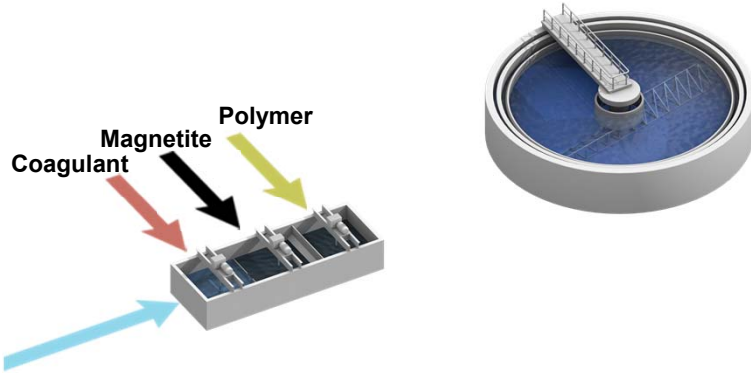
7

Flow Diagram



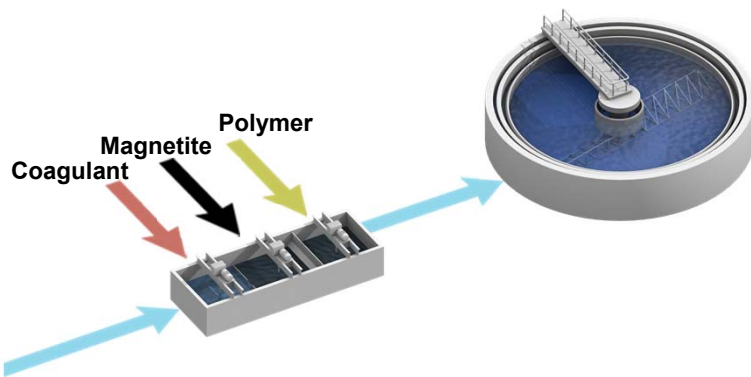
8

Flow Diagram



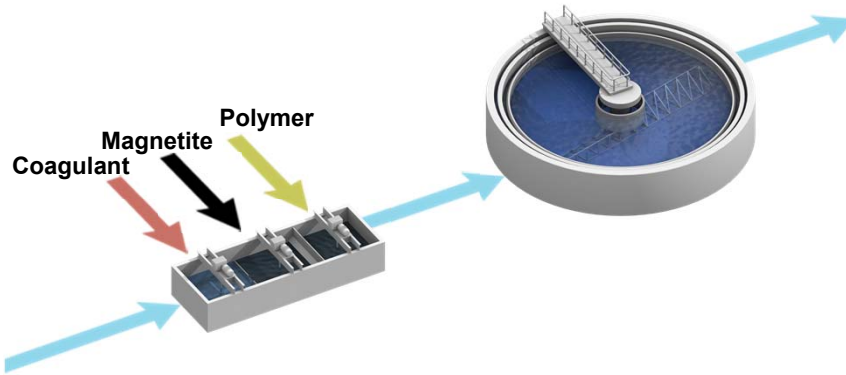
9

Flow Diagram



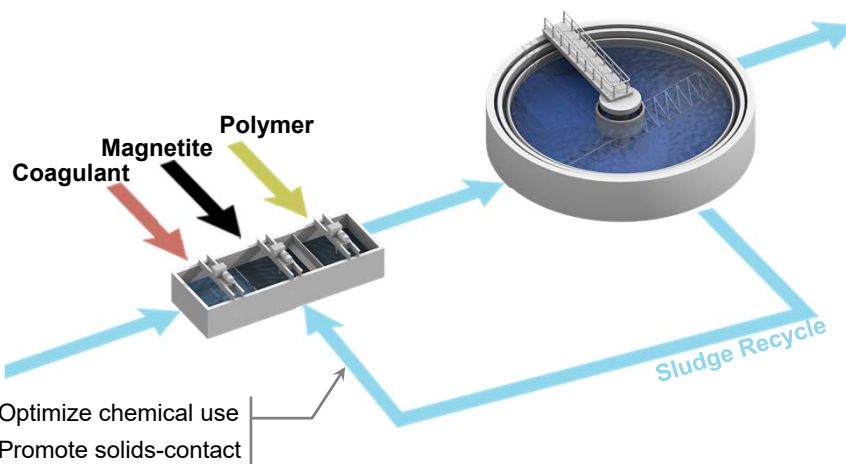
10

Flow Diagram

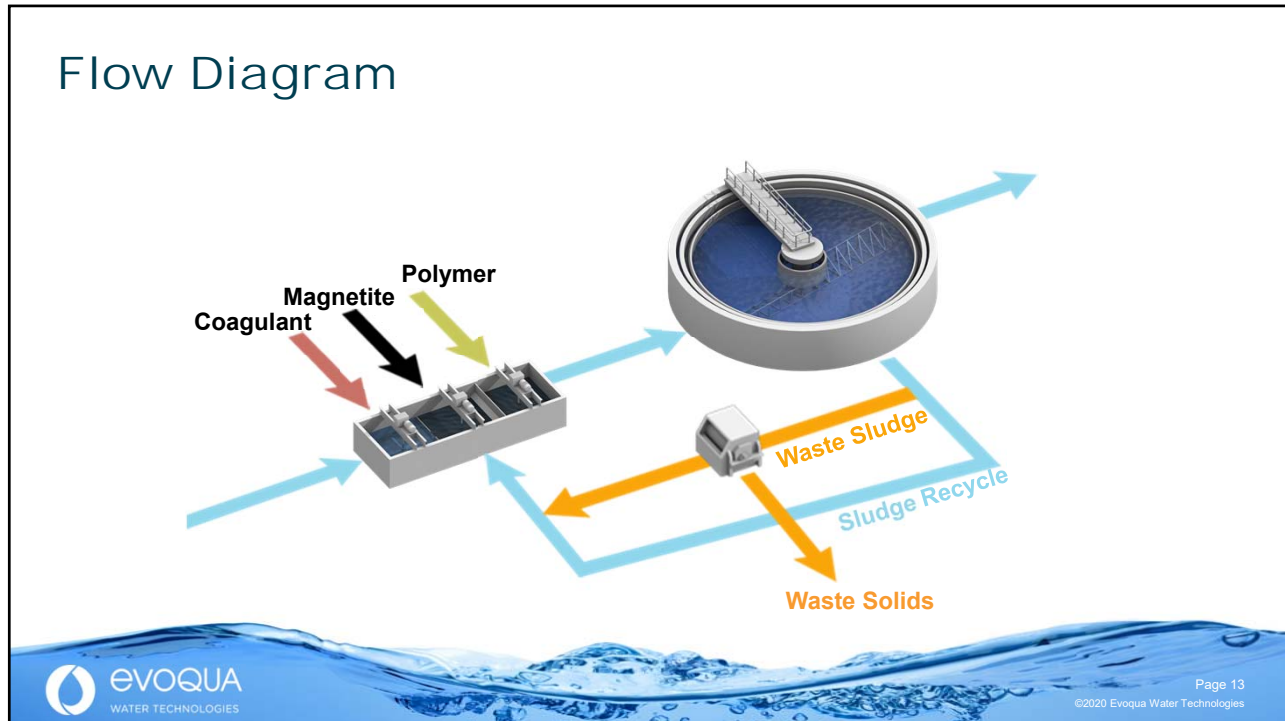


11

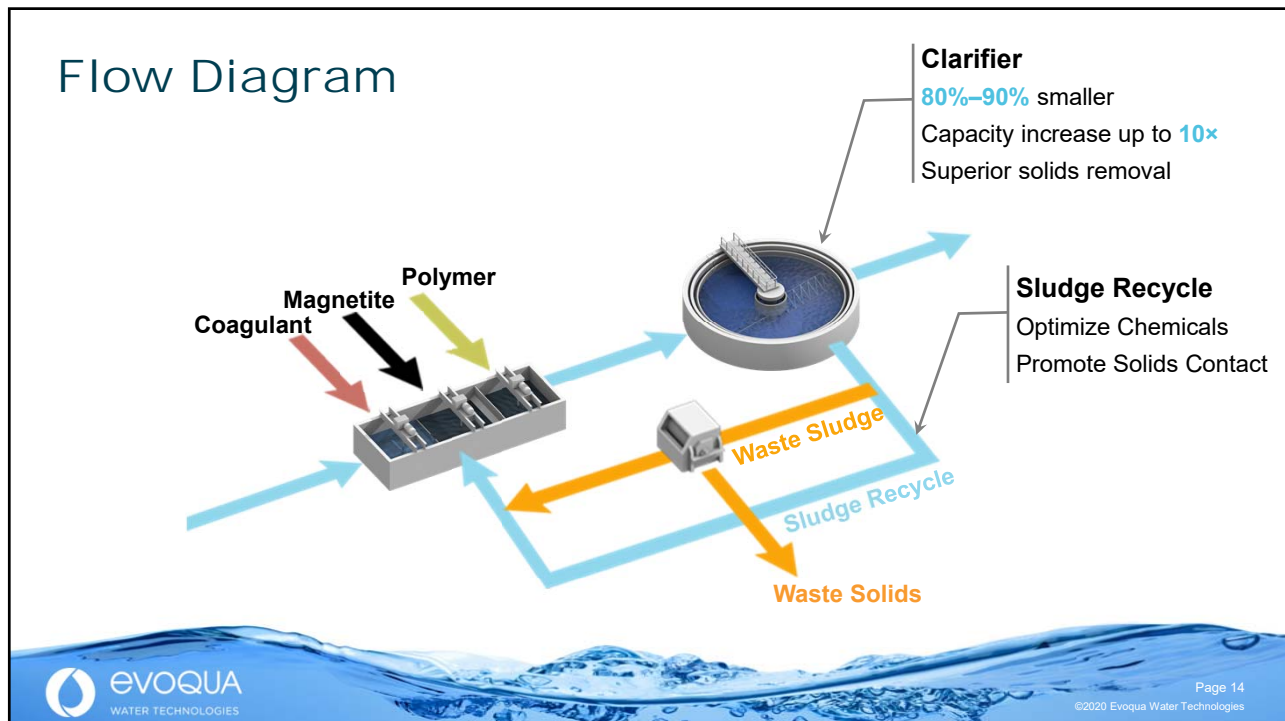
Flow Diagram



12



13



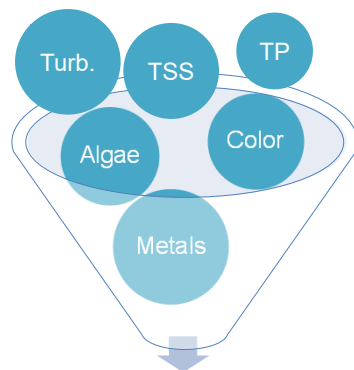
14

CoMag[®] System Settling



15

What can CoMag[®] Systems Remove?

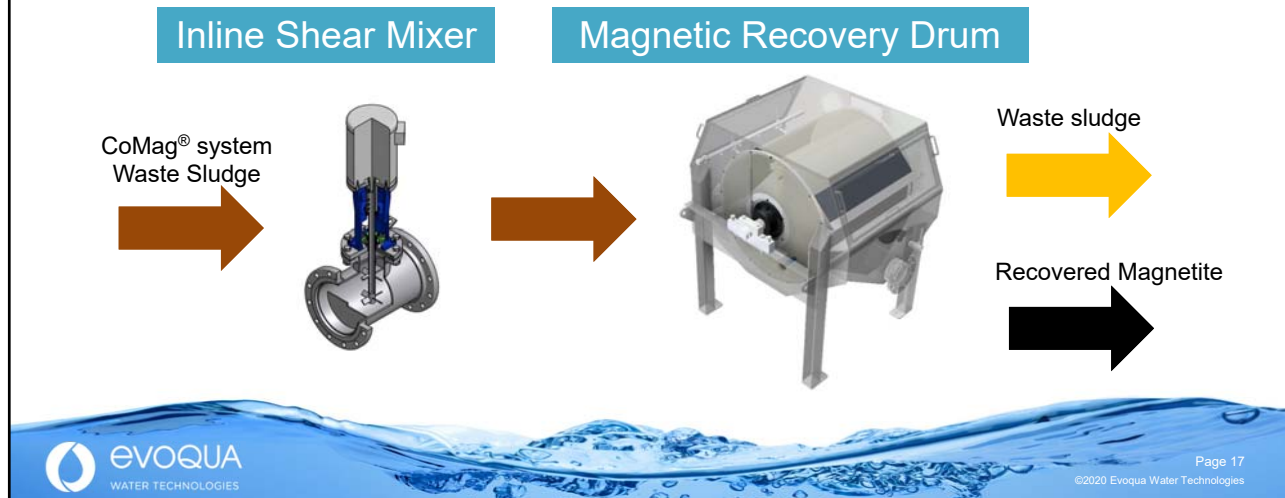


If it's **particulate**,
CoMag[®] systems can remove it!



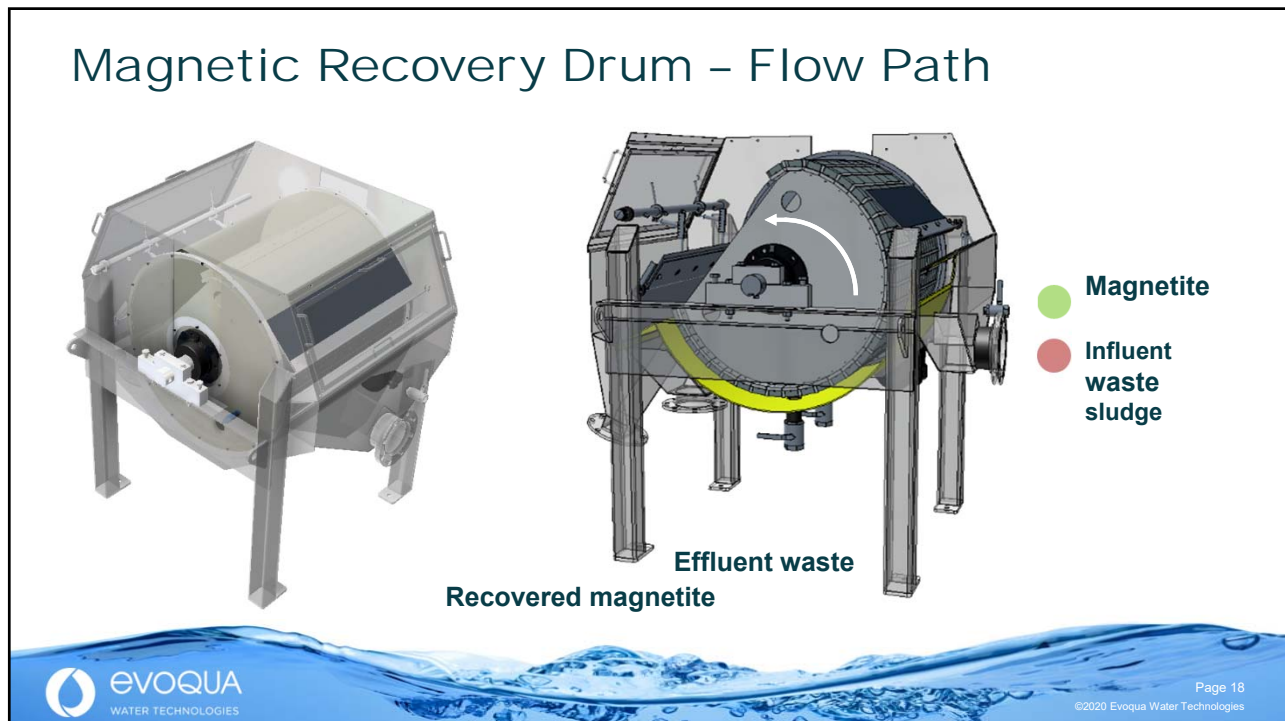
16

Magnetite Recovery Equipment



17

Magnetic Recovery Drum – Flow Path



18

Magnetite Feed Options



Equipment



Rotating

- Mixers
- Pumps
- Shear mixer
- Mag drum
- Clarifier drive
- Chemical feed
- Magnetite feed



Instruments

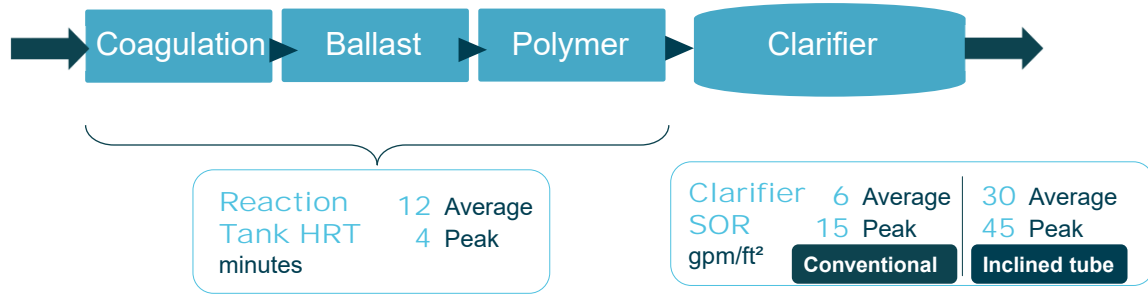
- Level
- pH
- Flow meters
- Turbidimeter
- Flow control valves



Controls

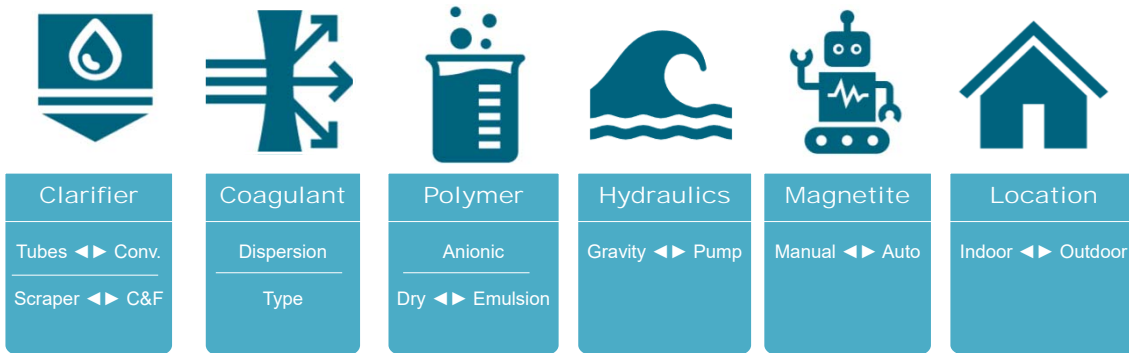
- Control panel
- HMI
- PLC

Sizing Guidelines - Tertiary Treatment



21

Other Design Considerations



22

Installations

30+ **Installations**
50+ **Pilots**

ENGLAND AND IRELAND

ISRAEL

evoQUA
WATER TECHNOLOGIES

Page 23
©2020 Evoqua Water Technologies

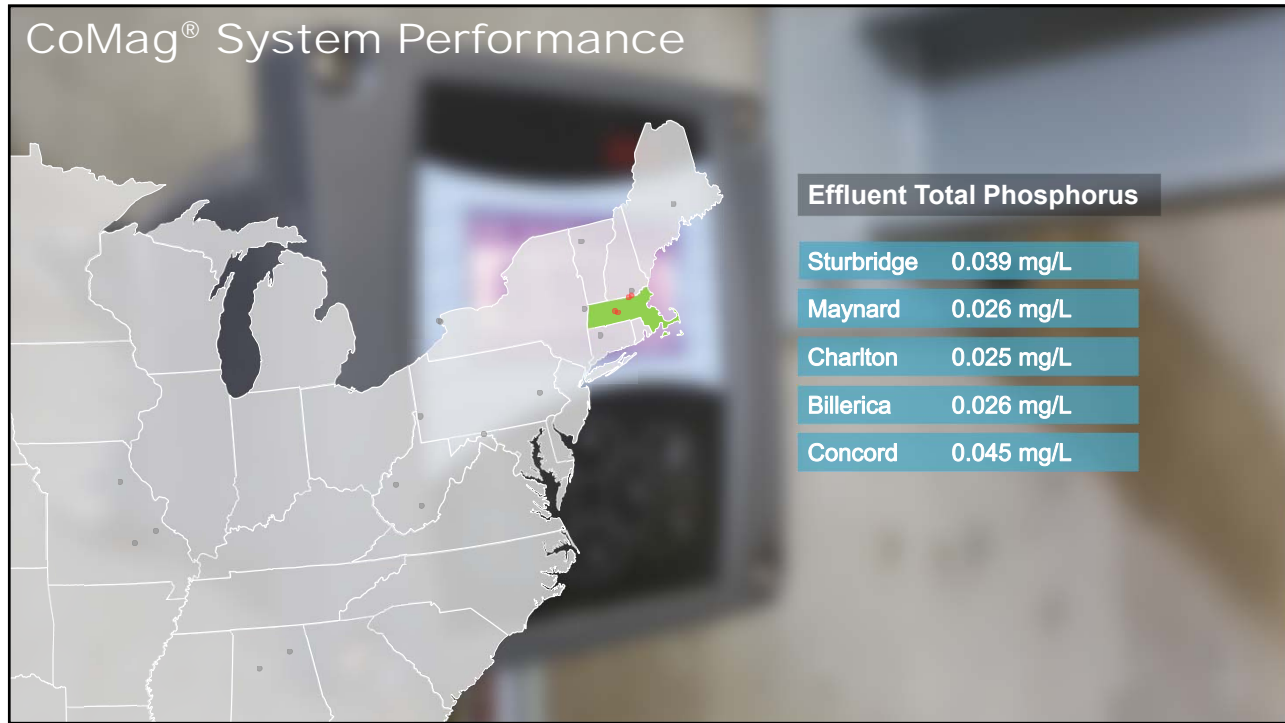
23

CoMag[®] System Performance

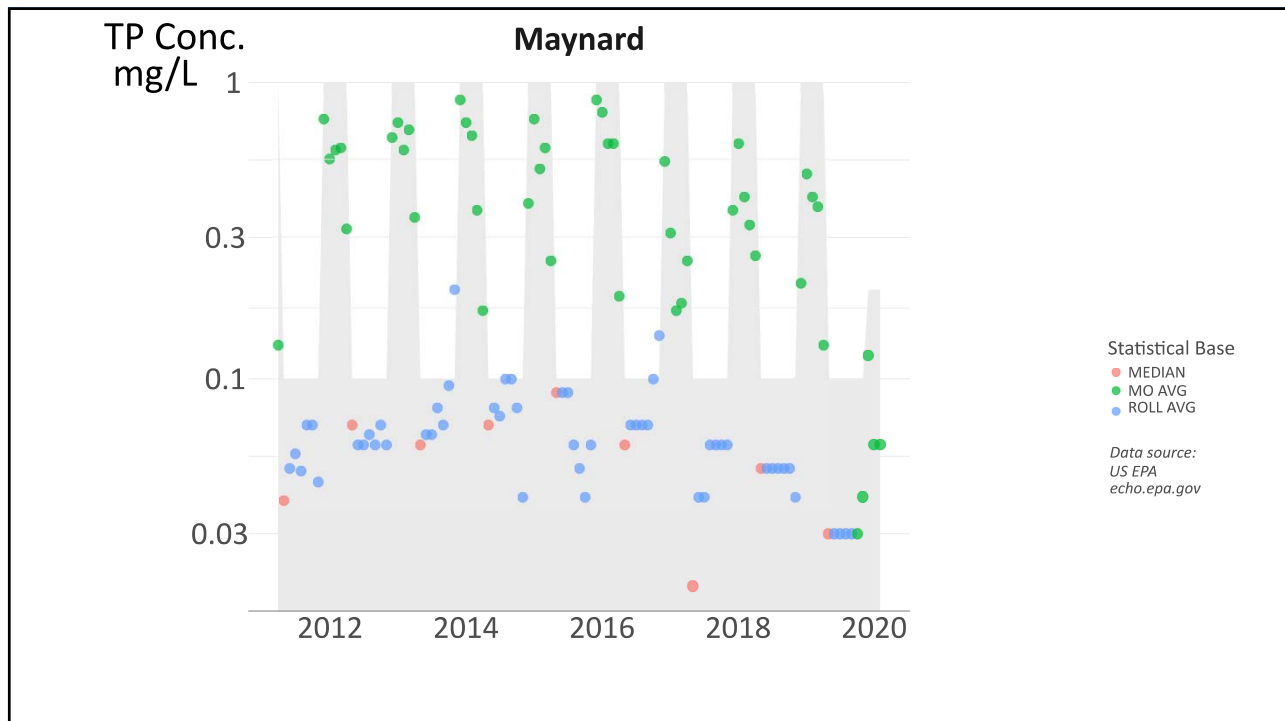
Eff Turb:
0.17 NTU
OUTPUT1: 4.27 mA

back home
menu enter

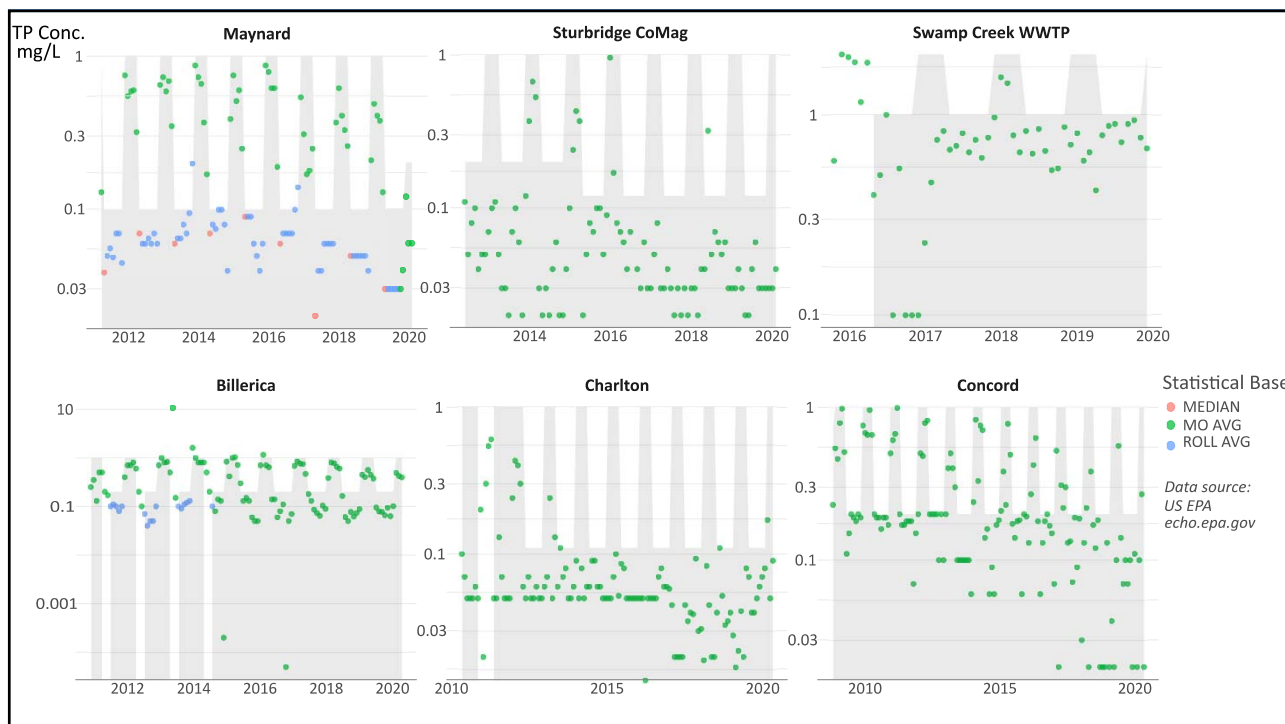
24



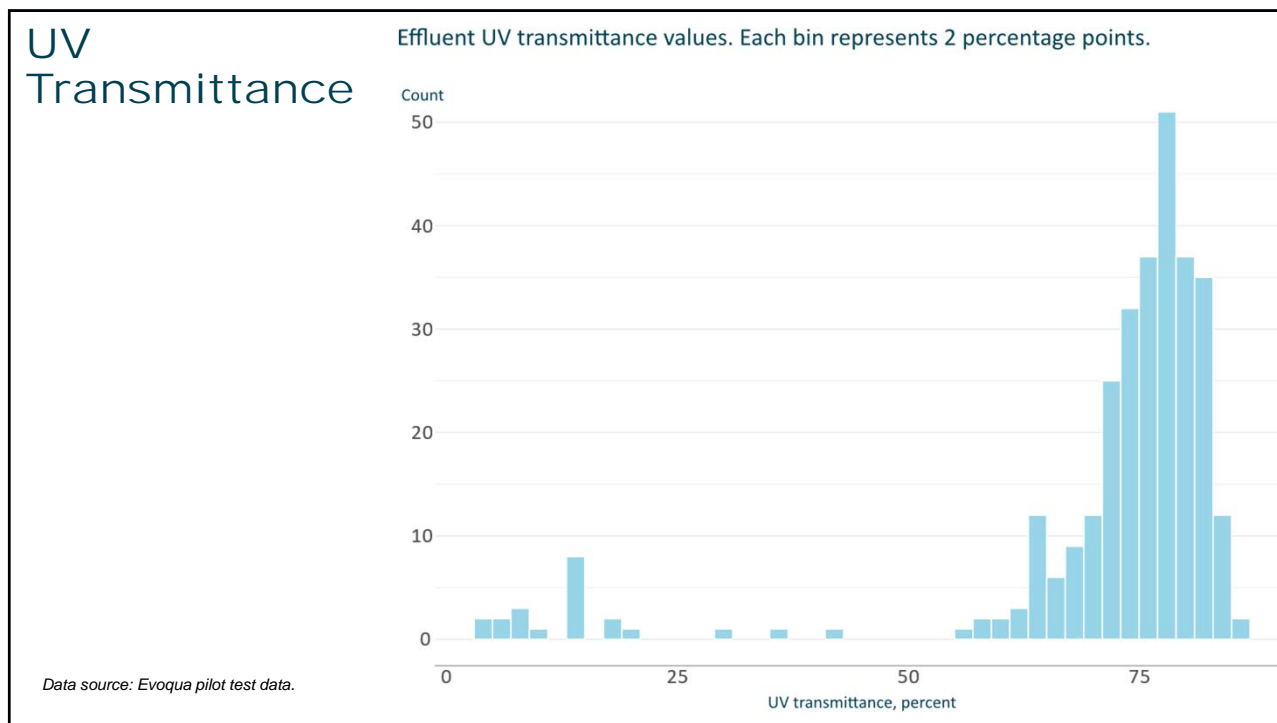
25



26



27



28



The image is a promotional graphic for Evoqua Water Technologies. At the top left is the Evoqua logo, a blue circle with a white water drop shape inside. To its right, the word "evoqua" is written in a lowercase, sans-serif font, with "WATER TECHNOLOGIES" in a smaller, uppercase font below it. In the center, there are two speech bubble icons: one containing a question mark and the other containing a list of three horizontal lines. Below these icons is a horizontal wave of blue water with bubbles rising from it. At the bottom of the graphic, the slogan "TRANSFORMING WATER. ENRICHING LIFE." is written in a bold, uppercase, sans-serif font. In the bottom right corner, there is a small copyright notice: "©2020 Evoqua Water Technologies".