



1

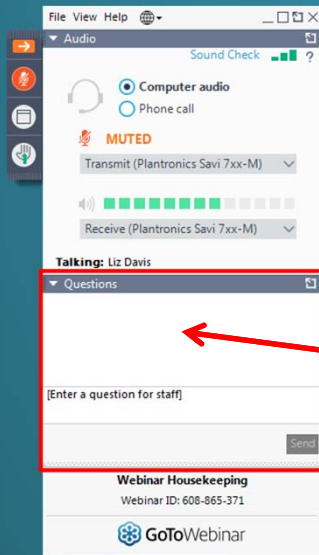
**Member Association Legislative &
Regulatory Update**

Wednesday, December 15, 2021
1:00 – 2:30 PM ET

The Water Environment Federation logo is located in the bottom right corner of the teal slide. It features the same stylized 'W' icon and text as seen in the first image.

2

How to Participate Today



- **Audio Modes**
 - Listen using Mic & Speakers
 - Or, select “Use Telephone” and dial the conference (please remember long distance phone charges apply).
- **Submit your questions using the Questions pane.**
- **A recording will be available for replay shortly after this webcast.**

3

Today's Speakers

- Brandon Koltz, *introductory remarks*
- Steve Dye, *Federal Policy Update*
- Frank Sylvester, US EPA
- Chris Horan, AZ Water
- Tanya Miro, WEA of Texas
- Julie Nahrgang & Jay Hoskins, *Q&A moderators*

4

Hot Topics Issues

- 12 Member Association Responses
 - Nutrient approach: Technology Standard for some states, WQBEL with variances; inconsistency within EPA Regions re compliance approach
 - PFOS/PFOA: Varied criteria for groundwater/drinking water/surface water. Some states no action
 - Wet weather/CSO/Stormwater: Post CSO LTCP compliance a concern; consent decrees for SSO correction; Additional MS4 monitoring requirements/blending restrictions
 - Affordability for SRF repayment - small communities
 - Workforce development
 - Biosolids: Landfill restrictions; unavailability of agricultural land; PFOS concerns; Biosolids as a nonpoint P source
 - Supply chain/shortage of truck drivers
- Additional hot topics responses: brandon.koltz@gmail.com



5

Funded in IJA or BBB

CW SRF

- \$1.9B in FY22
- \$2.2B in FY23
- \$2.4B in FY24
- \$2.6B in FY25 & FY26

CW SRF Emerging Contaminants

- \$250M/yr in FY22 – FY26

OSG (BBB)

- \$1.85B over five years

Low-Income Ratepayer Grants (BBB)

- \$225M over five years

Alternative Source Water (BBB)

- \$125M over five years

Need Annual Appropriations

Starting in FY 22

CW SRF

- FY22 \$2.4B
- FY23 \$2.75B
- FY24 \$3B
- FY25 & FY26 \$3.25

WIFIA

OSG

Resilience & Sustainability Grants

Connecting to POTWs

Stormwater Centers of Excellence

Stormwater Planning & Implementation Grants

Energy Efficiency Grants

Low Income Ratepayer Grants

Small POTW Grants



6

| WEF Water Advocates Program

How YOU can help NOW!

1. Go to: bit.ly/wef-water-advocates
2. Click the call-to-action buttons:
 - FY22 Water Infrastructure Appropriations
 - Finish the Bipartisan Infrastructure Package
 - Co-sponsor Wipes Labeling Legislation**NEW for WEFTEC!!!**
3. Fill out your info!
4. Share on social media!



Please click below to reach out to your Members today!

SUPPORT INCLUDING WATER INFRASTRUCTURE FUNDING IN THE CORONAVIRUS RELIEF PACKAGE

Take Action Now:

Support Water Infrastructure Funding in FY 2022!

Write your Members to urge them to provide robust funding for water infrastructure funding programs in the fiscal year 2022 budget!

The Clean Water and Drinking Water State Revolving Funds programs (SRF) are important financing tools for wastewater, drinking water, and stormwater agencies to build and modernize the water infrastructure that protects public health, the environment, and provides economic growth. The importance of safe and reliable drinking water and wastewater service during the Covid-19 crisis further highlights how critical it is for there to be robust funding to help communities address the challenges of aging water infrastructure. The Clean Water and Drinking Water SRF programs should be funded at levels that reflect the reality of our nation's water infrastructure crisis.

The EPA has estimated that \$655 billion is needed for drinking water and wastewater infrastructure over the next 20 years - and that doesn't include another estimated \$100 billion needed for stormwater infrastructure.

For FY22, it is necessary that the appropriation amounts for SRF programs be doubled - at least \$2.8 billion for the CWSRF and \$1.3 billion for the DWSRF (the fully authorized amount). I also urge you to fully fund the Water Infrastructure Finance and Innovation Act (WIFIA) program at \$20 billion for FY22. Congress created the new loan and loan guarantee program in 2014, and in 2015 corrected statutory language in the program to make it more useful to communities seeking low interest financing.

Our federal budget is under tremendous pressure and Congress is making difficult decisions about how to prioritize spending. Increased investment in water infrastructure will not only ensure that communities have clean and safe water, but studies have shown that there is tremendous support among the public for increased investments in water infrastructure, and those investments have a higher job creation return-on-investment rate than federal investments in military, transportation, healthcare and personal income tax cuts.

SUPPORT FUNDING FOR WATER INFRASTRUCTURE IN FY 2022



Ask Congress to Include Funding for the Water Utility Sector in Any Major Coronavirus Economic Recovery Package

Please sign with your Member of Congress and thank him or her for the work they will do to help us in this unprecedented crisis.

We received 174,000 signatures from 100,000 unique individuals and households in support of this petition.

WEF Contact:
 Amy Kathman
akathman@wef.org



Water Environment Federation
The Water Quality People!

7

WEF Government Affairs Webcast

December 15, 2021



United States
Environmental Protection
Agency

Office of Water

8

8

Environmental Justice Activities @ EPA



Whole-of-Government Approach

- Executive Orders
- EPA Draft Strategic Plan FY 2022-2026

Justice 40

- Scope
- Pilot and Covered Programs
- Implementation

Supporting Partners and Implementing BIL

- Partnering with States and other stakeholders
- Capacity Building
- Resiliency

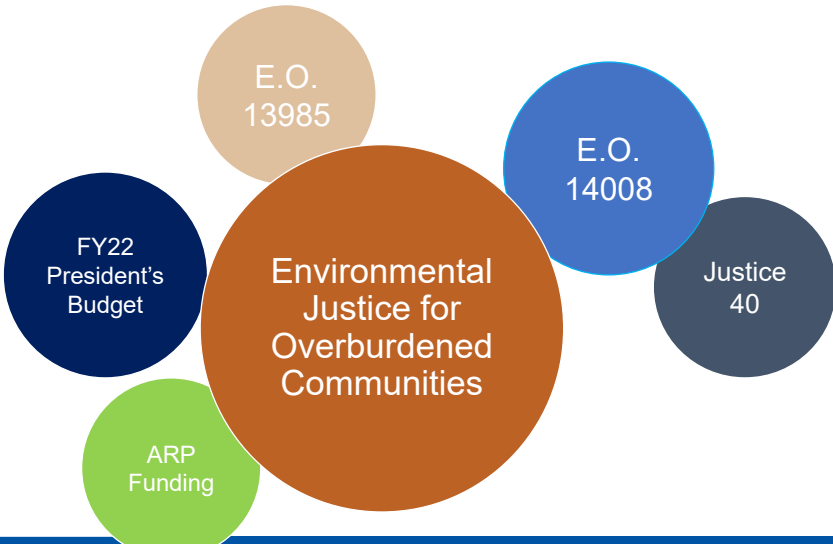
 United States Environmental Protection Agency

Office of Water

9

9

Whole-of-Government Approach



Environmental Justice for Overburdened Communities


E.O. 13985

E.O. 14008

Justice 40

ARP Funding

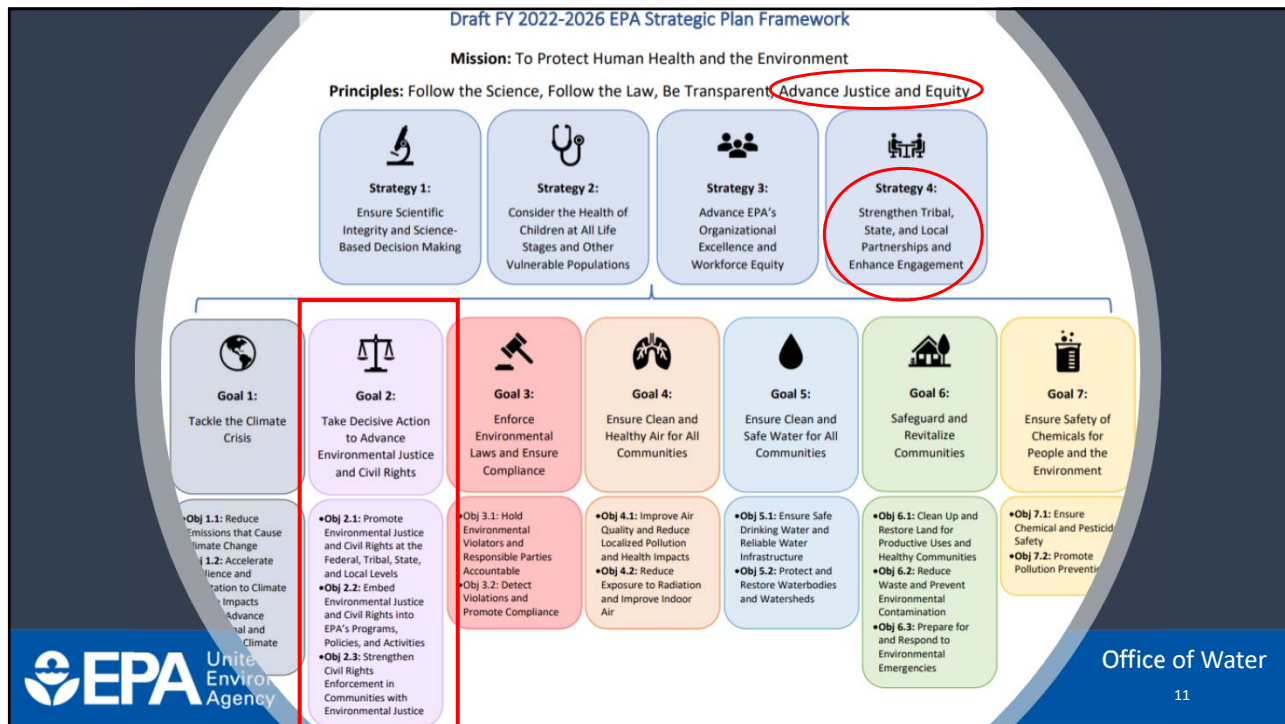
FY22 President's Budget

 United States Environmental Protection Agency

Office of Water

10

10



11

Justice 40

- Scope
 - Steer federal investments in a way that 40% of the overall benefits flow to disadvantaged communities
 - Covered Program Areas
 - Clean energy and energy efficiency
 - Clean transit
 - Affordable and sustainable housing
 - Reduction and remediation of legacy pollution
 - **Critical clean water infrastructure**
 - Workforce development
 - Covered Investments
 - Direct payments and spending, federal financial assistance: loans, grants, credits, guarantees
- OW Implementation
 - Build Capacity within disadvantaged communities
 - Leverage existing program authorities
 - Partnerships
 - Develop tools
 - Improve education and outreach
 - Engagement
 - Define benefits from covered programs
 - Identify significant barriers
 - Detect opportunities
 - Address types of program adjustments

SRF_Justice40@epa.gov
Sylvester.Frank.J@epa.gov

EPA United States Environmental Protection Agency

Office of Water

12

12



Supporting Partners and Implementing BIL

- Bipartisan Infrastructure Law (BIL) provides \$50 billion to EPA Water Programs – mostly through State Revolving Fund Programs
 - \$15 billion for lead pipe replacement
 - \$20+ billion for safe drinking water infrastructure
 - \$12+ billion for wastewater infrastructure
- Requires 49% to go out in the form of “additional subsidy”
- Adm. Regan’s Letter to Governors on BIL:
 - Target resources to disadvantaged communities; remove barriers
 - Lead Service Line Replacement – target communities disproportionately affected or impacted by lead in drinking water
 - Emerging Contaminants and PFAS – frontline communities
- Capacity Building
 - Technical, Managerial, Financial
 - Leveraging existing capacity at EPA, states, utilities, partners, stakeholders, NGOs
- Resiliency



Office of Water

13

13

Salt River Pima-Maricopa Indian Community

Environmental Protection & Natural Resources

Salt River Pima-Maricopa Indian Community

Community Development Department (CDD)

Water Quality Program

Christopher “Chris” Horan
CDD Assistant Director

December 15th, 2021

14

Salt River Pima-Maricopa Indian Community



Community

- The Salt River Pima-Maricopa Indian Community (SRPMIC or Community) is comprised of two Native American Tribes: the Pima, or "Akimel Au-Aauthm," (River People); and the Maricopa, or "Xalychidom Piipaash," (People who live toward the water). The Pima and Maricopa Tribes together comprise the Community.



15

Salt River Pima-Maricopa Indian Community



CDD Divisions

- Environmental Protection & Natural Resources (CDD-EPNR)
- Planning Services Division (CDD-PSD)
- Economic Development Division (CDD-EDD)
- Membership & Real Property Management (CDD-MRPM)
- Resident Resource & Services Property Management (CDD-RRS)
- Land Title & Records Office (CDD-LTRO)
- Discover Salt River Tourism Office (CDD-Tourism)

16

Salt River Pima-Maricopa Indian Community



CDD-EPNR DIVISION

Land Stewardship

- CARP
- Archaeology
- Waste Management
- Brownfields
- Range Management
- Fall Overhaul

➔

➔


Environmental Stewardship

- Air Quality
- Pesticide
- Compliance Assistance
- Earth Day
- Water Quality


Water Environment Federation
the water quality people®

17

Salt River Pima-Maricopa Indian Community



Water Quality Program




The Water Quality Program is responsible for monitoring and protecting the Community's water resources.

Water Environment Federation
the water quality people®

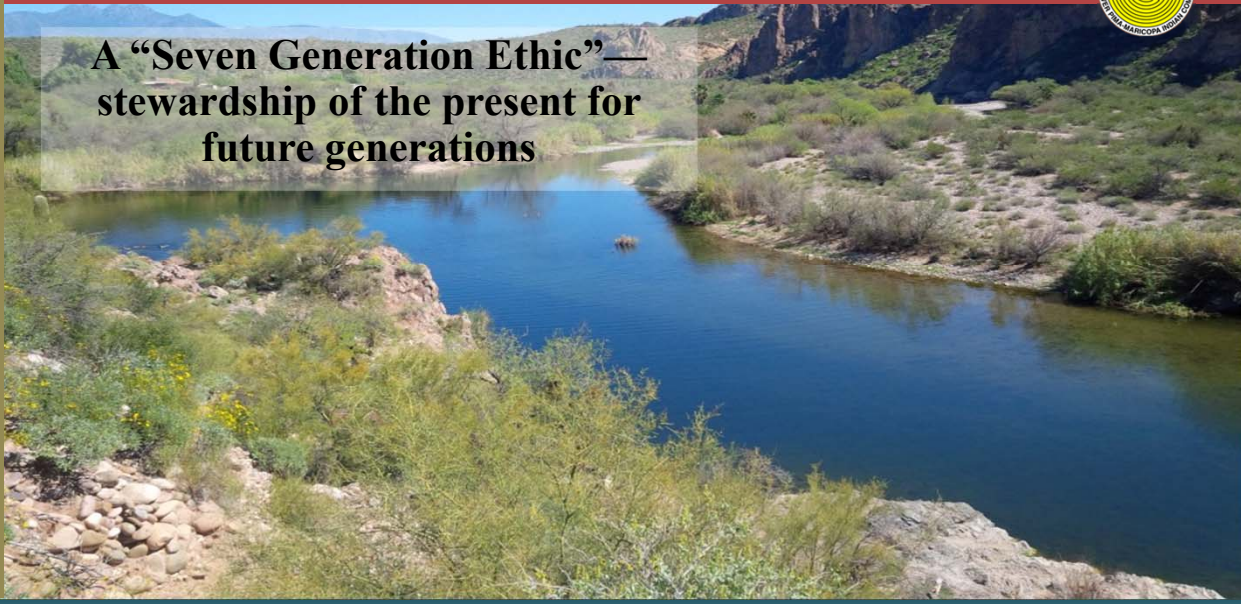
18


Salt River Pima-Maricopa Indian Community



Environmental Protection & Natural Resources


**A “Seven Generation Ethic”—
stewardship of the present for
future generations**



 Water Environment Federation
the water quality people®

19

Salt River Pima-Maricopa Indian Community




Environmental Protection & Natural Resources

Demonstration Wetland Project

- Goal: to treat a non-point source discharge to the Salt River channel



 Water Environment Federation
the water quality people®

20

Salt River Pima-Maricopa Indian Community



Environmental Protection & Natural Resources

Construction Began

- BEFORE: unlined channel dominated by non-native species
- Carries NPS flows from agricultural tail water, mining wash, and stormwater



Before




After

Water Environment Federation
the water quality people®

21


Salt River Pima-Maricopa Indian Community




Environmental Protection & Natural Resources

Wetland Description

- Approximately 200 feet in length
- Width varies from 50 to 100 feet
- Removed exotic species
- Planted native vegetation
- Bank stabilization






Water Environment Federation
the water quality people®


22


Salt River Pima-Maricopa Indian Community



Pole Planting Method

Before






After

Water Environment Federation
the water quality people®



23

Salt River Pima-Maricopa Indian Community



Native Vegetation

Surrounding uplands
planted with terrestrial
mixture of mesquite,
palo verde, cactus and
xeric shrubs

Water Environment Federation
the water quality people®

24



Channel Stabilization

Channel stabilization was an important component in the design of the demonstration wetland



Cottonwood Wetland





Water Quality Outreach

- Youth Council Annual River Clean Up
 - Pick up recreation trash
- Annual Fall Overhaul & Earth Day Events
- Biannual Household Hazardous Waste (HHW) Event



27



28

Salt River Pima-Maricopa Indian Community

Environmental Protection & Natural Resources

29

Salt River Pima-Maricopa Indian Community

Fall Overhaul and HHW

Environmental Protection & Natural Resources

Fall Overhaul is an opportunity for employees to provide service to the Community

30

Salt River Pima-Maricopa Indian Community



Earth Day & HHW



The Community celebrates Earth Day annually in April along with a Household Hazardous Waste Event



31

Salt River Pima-Maricopa Indian Community



Questions?



32


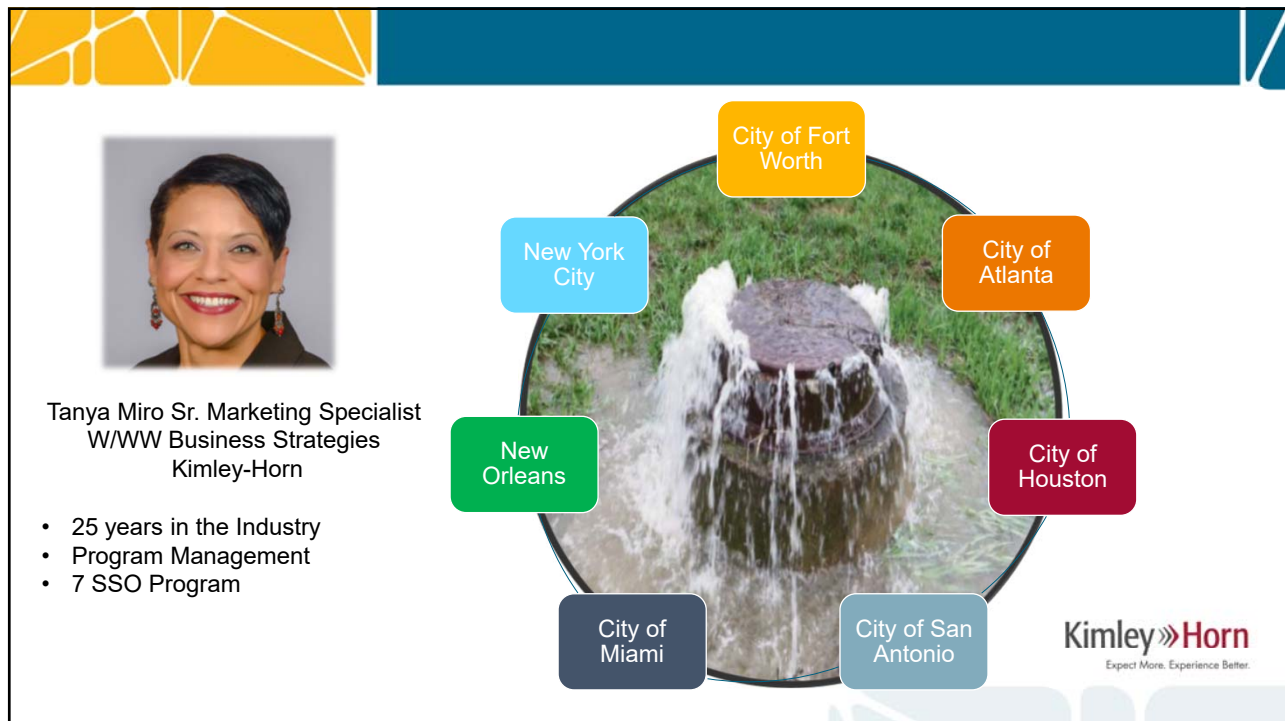


Applying Diversity, Equity, and Inclusion to CMOM Projects

Presented by: Tanya Miro
Sr. W/WW Marketing Specialist

Kimley»Horn
Expect More. Experience Better.

33



Tanya Miro Sr. Marketing Specialist
W/WW Business Strategies
Kimley-Horn

- 25 years in the Industry
- Program Management
- 7 SSO Program

City of Fort Worth

New York City

City of Atlanta

New Orleans

City of Houston

City of Miami

City of San Antonio

Kimley»Horn
Expect More. Experience Better.

34

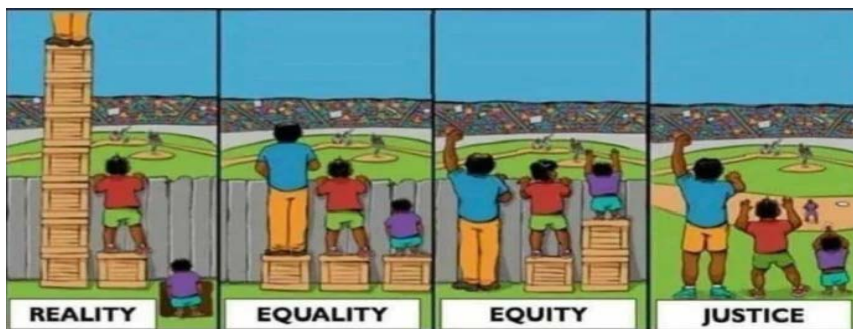
What is Equity?

• **Equity** refers to just and fair inclusion—a condition in which everyone has an opportunity to participate and prosper.

- Resiliency
- Changing Climates
- Aging Infrastructure
- Alternative Funding Source
- Equity requires viewing problems and solutions through united lens



35



One gets **more than** is needed, while the other gets **less than** is needed. Thus, a huge disparity is created.

The assumption is that **everyone benefits from the same supports**. This is considered to be equal treatment.

Everyone gets the support they need, which produces equity.

All 3 can see the game without supports or **accommodations because the cause(s) of the inequity was addressed**. The systemic barrier has been removed.

Kimley»Horn
Expect More. Experience Better.

36

Water Equity

Water Equity occurs when **all communities** have access to **safe, clean**, affordable drinking water and wastewater services; are **resilient** in the face of floods, drought, and other climate risks; have a role in **decision-making** processes related to water management in their **communities**; and share in the economic, social, and environmental **benefits** of water systems.

Kimley»Horn
Expect More. Experience Better.

37

CMOMs Programs the Equity Ambassadors Born From the SSO & Wet Weather Events

- Contingency and emergency response
- Computerized maintenance management system
- Collection system and pump stations operation and maintenance
- Cooking grease management
- Sewer mapping
- Safety and training
- Capacity certification

Kimley»Horn
Expect More. Experience Better.

38

CMOM Programs

- To Replace or Repair Aging Infrastructure
 - Brittle materials
 - Years of debris build up
- To Eliminate Sanitary Sewer Overflows (SSOs)
 - Caused by blockages, capacity issues, poor construction
 - Develop response plan to SSOs
- To Mitigate Costs and to Plan Spending
 - More cost effective to plan for improvements than react to emergencies
- To Ensure Regulatory Compliance
 - Greatly reduce or eliminate effluent violations, SSO violations



Kimley»Horn
Expect More. Experience Better.

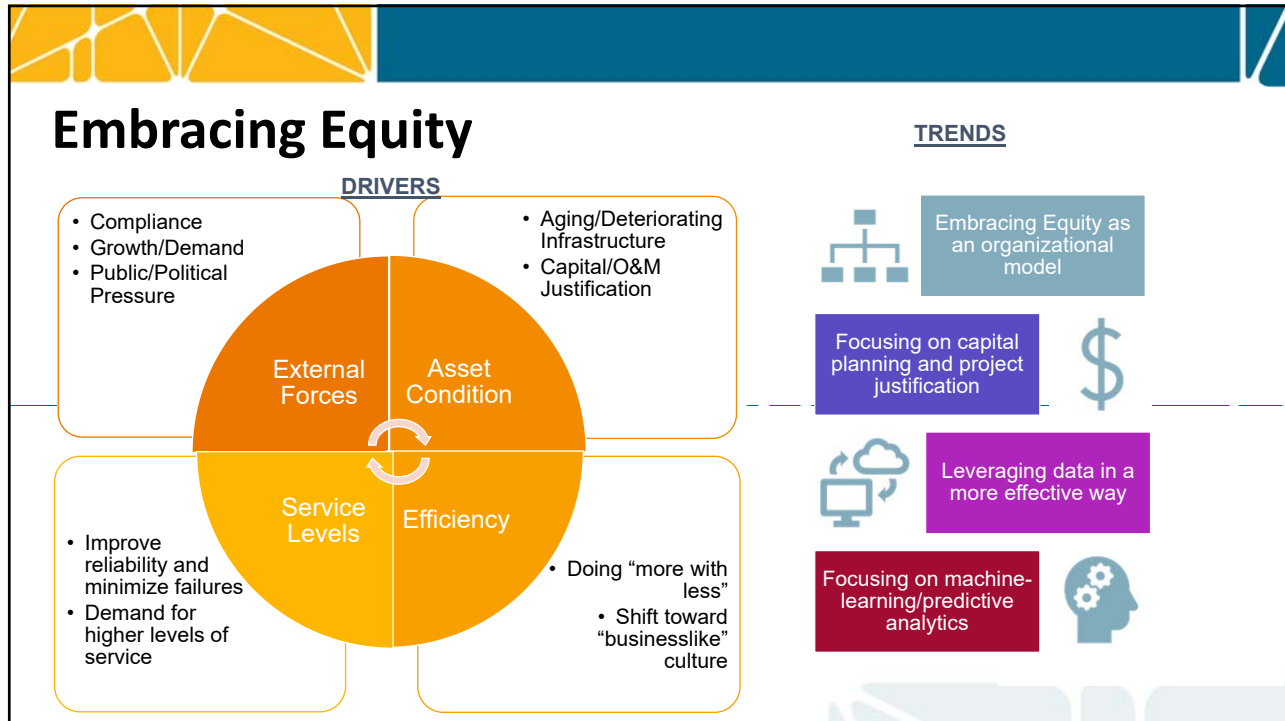
39

CMOM and Equity

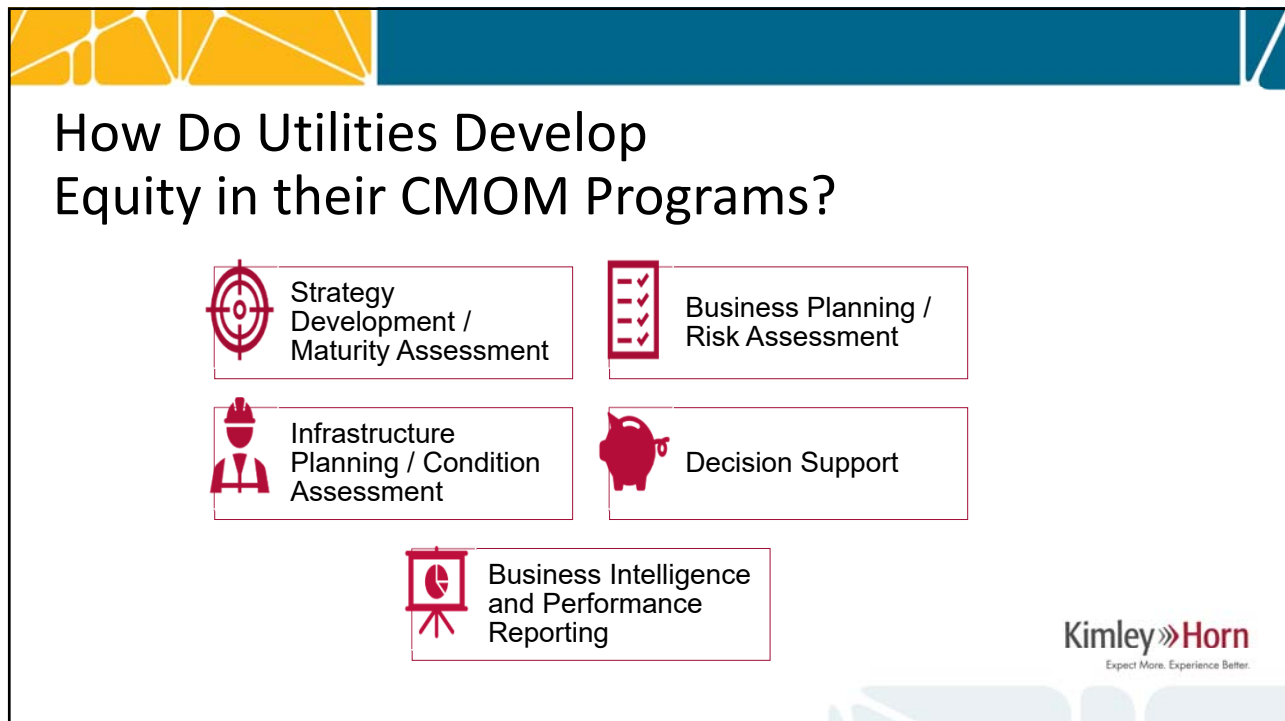
- Collaborating for the Equity & Inclusion
- Consider the following 3 things
 1. Ensure all people have access to clean, safe, affordable water service;
 2. Maximize the community and economic benefits of water infrastructure investment; and
 3. Foster community resilience in the face of a changing climate.
- Local governments with high levels of social equity activity are more likely to have an adopted plan that includes clearly articulated social equity goals, necessary resources committed to that plan, and staff assigned to administer it.

Kimley»Horn
Expect More. Experience Better.

40



41



42

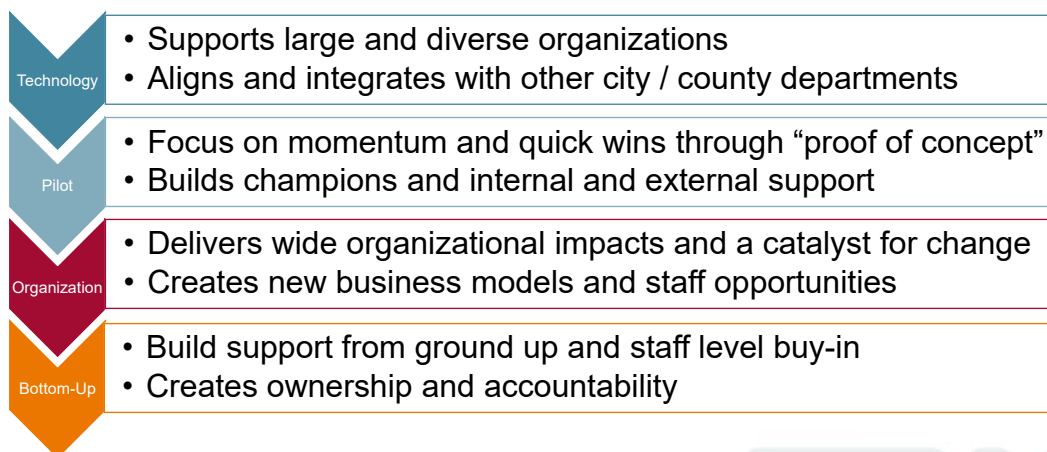
Strategy Is Simple

1. WHAT do we have?
2. WHAT condition is it in?
3. WHEN should we replace/rehabilitate?
4. WHAT will it cost?
5. HOW do we prioritize assets from different systems?
6. HOW do we sustain the program?



43

Utilities take a Diverse Approach



44



45

4 CIP Development and Prioritization

1 Review High Risk Assets

- Assess best risk reduction strategy
- Determine capital maintenance, or business strategy

2 Review Assets Near EUL

- Determine if additional testing or analysis is required
- Determine if run to failure is an option

3 Develop Bundled Projects

- Bundle projects into logical groups
- Review medium risk assets to see if they should be included

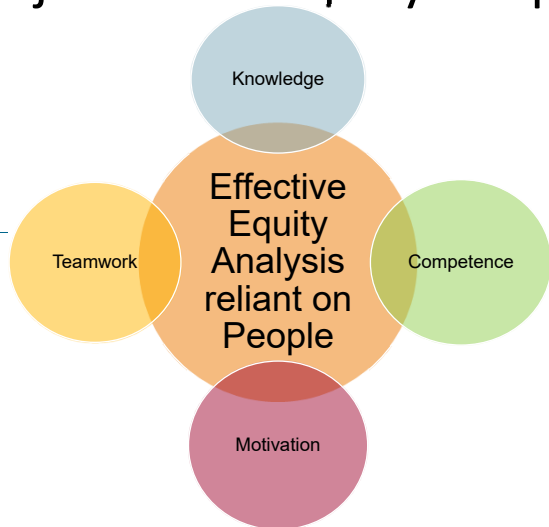
4 Align with Existing CIP

- Evaluate and prioritize with existing capital projects
- Review R&R growth, and enhancement balance

Kimley»Horn
Expect More. Experience Better.

46

Projects with Equity are possible



- Imagine the Future
- Envision a Community Built for All
- Plan for growth
- Communicate with your Stakeholder
- Think past the Pipe: to build a region for the Future
 - Fort Worth
 - Atlanta
 - Pittsburgh
 - San Antonio

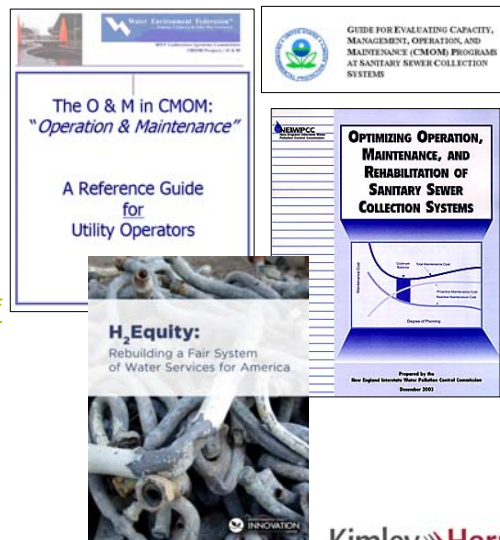
Kimley»Horn
Expect More. Experience Better.

47

Questions?

- EPA Guide for Evaluating CMOM Programs:
 - http://www.epa.gov/npdes/pubs/cmom_guide_for_collection_systems.pdf
- WEF O&M Reference Guide
 - http://www.cmom.net/WEF_CMOM_O&M_V23a.pdf
- H₂ Equity
 - [Water and Health Equity – EPIC \(policyinnovation.org\)](http://policyinnovation.org)

Tanya Miro
Tanya.Miro@Kimley-Horn.com



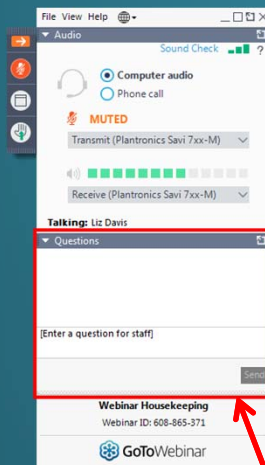
Kimley»Horn
Expect More. Experience Better.

48



49

Questions & Discussion



Submit your questions using the Questions pane.

- Brandon Koltz, *introductory remarks*
- Steve Dye, *Federal Policy Update*
- Frank Sylvester, US EPA
- Chris Horan, AZ Water
- Tanya Miro, WEA of Texas
- Julie Nahrgang & Jay Hoskins, *Q&A moderators*

50