

 **wef membership**

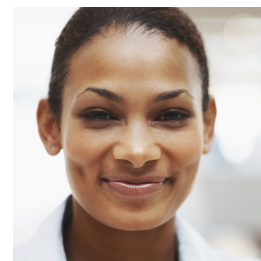
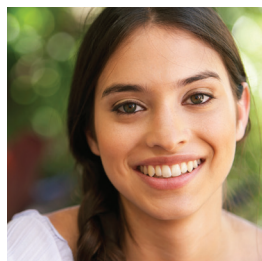
Corporate Membership



success by  
association



# Helping you do business more effectively, by bringing the world of water quality to your doorstep.



Since 1928, the Water Environment Federation® (WEF) has been dedicated to working for water quality professionals like you and your coworkers. WEF is a not-for-profit technical and educational organization with 33,000 individual members and 75 affiliated Member Associations representing an additional 50,000 water quality professionals throughout the world. WEF and its Member Associations proudly work to achieve our mission of preserving and enhancing the global water environment.

We offer unparalleled technical education, updates on the latest developments and information, cost-saving opportunities and solutions, as well as access to water quality experts and advocates. It is our goal to help you do business more effectively, by bringing the world of water quality to your doorstep.

# Membership means benefits

Designed for firms and organizations that support water environment professionals and wish to affiliate their organization with water quality leaders.

## Enhance Your Industry Skills

---

Stay on top of advances, trends, and proven solutions through WEF's highly regarded technical education and training opportunities.

## Facilitate Lifelong Learning

---

Choose your training and earn CEUs and PDHs through WEF's educational programs, including: WEFTEC®, WEF Specialty Conferences, hot topic seminars, workshops, and *free* webcasts.

## Champion Productive Relationships

---

Within WEF and Member Associations (MAs), members work to help each other develop and grow professionally, while building valuable relationships with industry partners and prospects.

## Enrich Your Leadership Potential

---

Gain leadership skills that can be applied to your career by volunteering your service to WEF and a WEF MA committee.

## Increase Awareness and Recognition in Your Field

---

Each year, WEF presents awards for outstanding contribution to the water environment profession.

## Master Your Career Goals

---

Tap into the leading career network for the water community, WEF's Job Bank, where dozens of new jobs are posted each month.

The foundation of WEF membership is the philosophy that every individual member, working in water quality, contributes to making our world a better place to live. Corporate Membership entitles one individual within the organization to receive WEF membership benefits.

### Annual Membership Dues\*

---

Corporate	\$368
-----------	-------

\*Dues do not reflect your local WEF Member Association dues.

## WEF Member Associations

---

Included in WEF membership is membership to your local Member Association – champions for water quality on a regional level, providing convenient, affordable opportunities for training and networking with water professionals in your area.

# What's included with your Corporate membership

## Publications

■	Water Environment & Technology (incl. Operations Forum)
■	Water Environment Regulation Watch
■	Water Environment Research Online
■	WEF Conference Proceedings Online
■	WEF Highlights
■	Free access to WEF Webcasts
■	Member discounts at WEF Events (incl. WEFTEC and Conferences)
■	Member discounts on WEF products and services
■	Opportunities for service on WEF Committees
■	Membership with local Member Association
■	Up to 20% off Knowledge Center products

**International Associations** To join an association outside the U.S. and Canada, contact: [csc@wef.org](mailto:csc@wef.org) or +1-571-830-1545.

## Local MA Corporate Dues

<b>United States Associations</b> (includes both WEF and MA dues)		
AK	Alaska WWMA	\$398.00
AL	Alabama's WEA	\$500.00
AR	Arkansas WEA	\$468.00
AZ	Arizona Water Association	\$418.00
CA	California WEA	\$678.00
CO	Rocky Mountain WEA	\$403.00
CT	New England WEA	\$411.00
DC	Chesapeake WEA	\$431.00
	Federal Water Quality Association	\$393.00
DE	Chesapeake WEA	\$431.00
FL	Florida WEA	\$448.00
GA	Georgia Association of Water Professionals	\$417.00
HI	Hawaii WEA	\$428.00
IA	Iowa WEA	\$388.00
ID	Pacific Northwest CWA	\$423.00
IL	Central States WEA	\$393.00
	Illinois WEA	\$393.00
IN	Indiana WEA	\$403.00
KS	Kansas WEA	\$378.00
KY	Kentucky-Tennessee WEA	\$388.00
LA	Louisiana WEA	\$468.00
MA	New England WEA	\$411.00
MD	Chesapeake WEA	\$431.00
	Federal Water Quality Association	\$468.00
ME	New England WEA	\$411.00
MI	Michigan WEA	\$468.00
MN	Central States WEA	\$393.00
MO	Missouri WEA	\$386.00
MS	Mississippi WEA	\$408.00
MT	Montana WEA	\$379.00
NE	Nebraska WEA	\$376.00
NC	North Carolina WEA	\$448.00
ND	North Dakota WEA	\$388.00
NH	New England WEA	\$411.00
NJ	New Jersey WEA	\$430.00
NM	Rocky Mountain WEA	\$403.00
NV	Nevada WEA	\$378.00
NY	New York WEA	\$493.00
OH	Ohio WEA	\$418.00
OK	Oklahoma WEA	\$418.00
OR	Pacific Northwest CWA	\$423.00
PA	Pennsylvania WEA	\$498.00
PR	Puerto Rico W&EA	\$418.00
RI	New England WEA	\$411.00
SC	WEA of South Carolina	\$403.00
SD	South Dakota WEA	\$383.00
TN	Kentucky-Tennessee WEA	\$388.00
TX	WEA of Texas	\$418.00
UT	WEA of Utah	\$418.00
VA	Virginia WEA	\$413.00
	Federal Water Quality Association	\$468.00
VT	New England WEA	\$411.00
WA	Pacific Northwest CWA	\$423.00
WV	West Virginia WEA	\$380.00
WI	Central States WEA	\$393.00
WY	Rocky Mountain WEA	\$403.00
<b>Canadian Associations (includes MA dues)</b>		
Atlantic Canada Water & Wastewater Association		\$398.00
British Columbia Water & Wastewater Association		\$467.00
Quebec – Reseau Environment		\$368.00
WEA of Ontario		\$460.00
Western Canada WEA		\$433.00

\*Some MAs do not use WEF to collect their dues. You may receive an invoice from the MA.

# WEF Corporate Membership Application 2017



**Please Check:**  New /  Renewal Current WEF ID Number \_\_\_\_\_

**ACQ. Code**  
for WEF use only **COR17**

Name of Company/Firm \_\_\_\_\_

Headquarters Address, Street or P.O. Box \_\_\_\_\_ Phone Number \_\_\_\_\_

City \_\_\_\_\_ State \_\_\_\_\_ Zip \_\_\_\_\_ Country \_\_\_\_\_

Letter of the alphabet you would like your company listed under: \_\_\_\_\_

## Name of One Official Representative

First Name \_\_\_\_\_ M.I. \_\_\_\_\_ Last Name \_\_\_\_\_ Suffix (Jr., Sr., etc.) \_\_\_\_\_

Title \_\_\_\_\_ Date of Birth (mm/yy): \_\_\_\_\_

City \_\_\_\_\_ State \_\_\_\_\_ Zip \_\_\_\_\_ Country \_\_\_\_\_

Address, Street or P.O. Box (if different from above) \_\_\_\_\_

Home Phone \_\_\_\_\_ Business Phone \_\_\_\_\_

Fax Number \_\_\_\_\_ E-mail Address \_\_\_\_\_

**Member Association Memberships**

**MEMBER ASSOCIATION (MA) CHOICE\*\***

\*\* By joining WEF, you also become a member of a local Member Association (MA). Please select the MA you wish to join from the list on the previous page. Note: District of Columbia, Illinois, Maryland, and Virginia residents have two MA choices. Please indicate your choice below. If you wish to join both, please add the other in the Dual MA section below.

Please indicate additional WEF MA you would like to join and include the MA's Dual Membership dues. MA 2 \$

**Corporate Membership Information**

One individual at the organization (as designated on this form) is entitled to receive WEF Corporate Member benefits. Please refer to the Corporate Membership dues grid on page 2 for the total WEF/MA dues amount.

WE&T (including Operations Forum)  
 Water Environment Research (Online)  
 Water Environment Regulation Watch  
 WEF Highlights

\$

**Additional WEF Subscriptions**

Consider including additional WEF resources in your membership package! Check the appropriate subscription and include the subscription cost in your payment. NOTE: Prices listed reflect a substantial member discount!

<input type="checkbox"/> World Water	\$75.00	\$
<input type="checkbox"/> World Water: Water Reuse and Desalination	\$55.00	\$
<input type="checkbox"/> World Water: Stormwater Management	\$55.00	\$

**PAYMENT** Forms received without payment will not be processed Federal Tax ID #: 53-0225129

**Check** in U.S. dollars made payable to WEF Check No. \_\_\_\_\_

**Credit Card**  American Express |  MasterCard |  VISA Card Number \_\_\_\_\_ Exp Date \_\_\_\_\_ CVV \_\_\_\_\_

Name on Card \_\_\_\_\_ Signature \_\_\_\_\_

Billing Address \_\_\_\_\_  
*I authorize WEF to charge my credit card for the amount indicated.*

City \_\_\_\_\_  **Sign me up for auto renewals**

State/Prov. \_\_\_\_\_ Zip/Post Code \_\_\_\_\_

**GRAND TOTAL** Forms received without payment will not be processed \$

Dependent upon your membership level, \$55, \$47 or \$20 of your membership dues is allocated towards a subscription of WE&T that is non-deductible from the membership dues.

## Send Form & Payment to:

WEF Membership • PO Box 38008 • Baltimore, Maryland 21297-8008  
 For more information, call 1-800-666-0206, or +1-571-830-1545 (globally) • csc@wef.org

Signature (Official Representative) \_\_\_\_\_ Date \_\_\_\_\_  
 (Signature required for all applications)



# Membership Application Job Codes 2017

## To help us serve you better, please complete the following:

Choose the one that most closely describes your organization and job function and enter it in the Employment Information section of the membership form.

### 1. What is the nature of your ORGANIZATION? (circle one only) (ORG)

- |   |  |   |
|---|--|---|
| 01 Public/Private, Wastewater and/or Drinking Water and/or Stormwater (e.g. municipality, utility, authority) | 05 Consulting or Contracting Firm (e.g., Engineering, Contracting, Environmental, Landscape Architecture)    | 09 Manufacturer of Water/Wastewater/Stormwater Equipment or Products      |
| 02 Public/Private Wastewater only (e.g. municipality, utility, authority)                                     | 06 State, Federal, Regional Government Agency (e.g., U.S. EPA, State Agency, etc.)                           | 10 Water/Wastewater/Stormwater Product Distributor or Manufacturer's Rep. |
| 03 Public/Private Drinking Water only (e.g. municipality, utility, authority)                                 | 07 Research or Analytical Laboratories   | 11 Public/Private Stormwater (MS4) Program Only                           |
| 04 Industrial Systems/Plants (Manufacturing, Processing, Extraction) (please specify) _____                   | 08 Educational Institution (Colleges, & Universities, Libraries, Non-profits, & other related organizations) | 12 Public Finance, Investment, and Banking                                |
|   |  | 13 Non-profits (e.g., Trade association, NGO, Advocacy, etc.)             |
|   |  | 99 Other (please specify) _____   |

### 2. What is your Primary JOB FUNCTION? (circle one only) (JOB)

- |  |  |   |
|--|--|---|
| 01 Management: Upper or Senior (e.g., President, Vice President, Owner, Executive Director, Director, General Manager, etc.)   | 03 Engineering & Design Staff (e.g., Consulting Engineer, Civil Engineer, Mechanical Engineer, Chemical Engineer, Landscape Architect, Environmental/Wetland Scientist, etc.)  | 06 Purchasing/Marketing/Sales (e.g., Purchasing, Sales Person, Market Representative, Market Analyst, etc.) |
| 02 Management: Engineering, Laboratory, Operations, Inspection, Maintenance (e.g., Superintendent, Manager, Section Head, Department Head, Chief Engineer, Division Head, Landscape Architect, etc.) | 04 Scientific & Research Staff (e.g., Chemist, Biologist, Analyst, Lab Technician, Environmental/Wetland Scientist, etc.)  | 07 Educator (e.g., Professor, Teacher, etc.)  |
|  | 05 Operations/Inspection & Maintenance (e.g., Shift Supervisor, Foreman, Plant Operator, Service Representative, Collection Systems Operator, BMP Inspector/maintenance, etc.) | 08 Student  |
|  |  | 09 Elected or Appointed Public Official (Mayor, Commissioner, Board or Council Member, etc.)                |
|  |  | 10 Other (please specify) _____   |

### 3. What areas do you consider to be your KEY FOCUS AREAS? (circle all that apply) (FOC)

- |  |  |  |
|--|--|--|
| 01 Collection Systems                            | 08 Public Education/Information                            | 14 Water Reuse and/or Recycle                                |
| 02 Drinking Water                                | 09 Residuals/Sludge/Biosolids/Solid Waste                  | 15 Watershed/Surface Water Systems                           |
| 03 Industrial Water/Wastewater/Process Water     | 10 Stormwater Management/Floodplain Management/Wet Weather | 16 Water/Wastewater Analysis and Health/Safety Water Systems |
| 04 Groundwater                                   | 11 Toxic and Hazardous Material                            | 17 Other _____   |
| 05 Odor/Air Emissions                            | 12 Utility Management and Environmental                    |  |
| 06 Land and Soil Systems                         | 13 Wastewater  |  |
| 07 Legislation (Policy, Legislation, Regulation) |  |  |

### 4. Optional Items (OPT)

#### How many years have you worked in the industry?

1. 1-5
2. 6-10
3. 11-20
4. 21-30
5. >30 years

#### Gender

1. Female
2. Male

#### Education level? (ED)

- |                      |                     |
|----------------------|---------------------|
| 1. High School       | 5. Bachelors Degree |
| 2. Technical School  | 6. Masters Degree   |
| 3. Some College      | 7. JD               |
| 4. Associates Degree | 8. PhD              |

#### Education/Concentration Area(s) (CON)

1. Physical Sciences (Chemistry, Physics, etc.)
2. Biological Sciences
3. Engineering Sciences
4. Liberal Arts
5. Law
6. Business

# Membership means knowledge

The latest updates and innovation in the water sector.

## WEF PERIODICALS



This monthly magazine keeps water and wastewater utility staff, industrial waste managers, consultants, and other interested professionals abreast of current events, trends, and technologies in the water quality field. *WE&T* analyzes related regulatory, legal, and political issues; discusses new and effective approaches to wastewater treatment and watershed management; and notes activities in other fields that could affect water quality. Each issue also contains a special section, "Operations Forum," that focuses on the day-to-day concerns of operating and maintaining wastewater treatment facilities. (12 issues)



*World Water*™ is a bi-monthly publication covering a wide spectrum of the global water and wastewater industry from its source development through treatment, reuse, and disposal technologies. *World Water's* editorial pages cover the whole spread of information from the latest engineering and technical developments to industry news. Presented in an easily assimilated style, *World Water* offers today's busy water engineer/executive an overview of what is happening in the world of water supply, distribution and wastewater treatment, globally. (6 issues)



A monthly, peer-reviewed journal, *Water Environment Research* Online keeps engineers, scientists, academics, and other water quality professionals up to date on the latest research. Articles cover a range of issues, including municipal and industrial treatment methodologies, surface aquatic system assessment, fate and effects of pollutants, residue management, groundwater remediation, and contaminant analysis. Plus, a fully searchable annual Literature Review provides a review of published books and articles on water quality topics from the previous year. (12 issues)



Available as a membership add-on subscription, *World Water: Water Reuse & Desalination*™ is designed to address the growing informational, technical and operational needs of global water reuse and desalination professionals. The editorial content of *World Water: Water Reuse & Desalination* reflects the global outlook, knowledge, and technical expertise of water supply solutions unique to the growing area of reuse and desalination. Editorial content includes potable water and industry reuse issues; seawater desalination; water quality issues in reuse and desalination processes; and the financial, policy, and public acceptance aspects of water reuse and desalination. (4 issues)



Available as a membership add-on subscription, *World Water: Stormwater Management*, focuses on current solutions for managing runoff and stormwater flows on municipal, industrial, and commercial lands. Topics include low impact development, green infrastructure, collection and conveyance, drainage systems, erosion and sediment control, water quality monitoring, treatment equipment, and sustainable stormwater harvesting and reuse. *Stormwater Management* offers water professionals the opportunity to learn about promising research and development initiatives. (4 issues)

## WEF NEWSLETTERS



WEF's online membership newsletter covers current Federation activities, Member Association news, and items of concern to the water quality field. *WEF Highlights* is your source for the most up-to-the-minute WEF news and member information.



Consider this a monthly online snapshot of Washington, D.C.'s water quality activities. *Regulation Watch* provides concise reports of related bills, regulations, legal decisions, congressional hearings, and other federal government actions, following key issues from introduction to final determination. (12 issues)



A free weekly online newsletter, *This Week in Washington* brings you timely water quality information from the U.S. EPA and around the globe.

### Proceedings of the Water Environment Federation

Hosted on the IngentaConnect website, *Proceedings of the Water Environment Federation* is an archival library of the papers presented at the annual WEF Technical Exhibition and Conference and other conferences. Access available 12 months after the event.



*Stormwater Report*, available by e-mail as a monthly digest, is a Water Environment Federation news service dedicated exclusively to stormwater news, from green infrastructure to wet weather issues.



601 Wythe Street  
Alexandria, Virginia  
22314-1994 USA  
703-684-2400

